

Concord-Carlisle Regional High School



Neighborhood Meeting

April 12, 2012

omr architects

Ways to stay informed:

Visit www.cchsbuilding.org

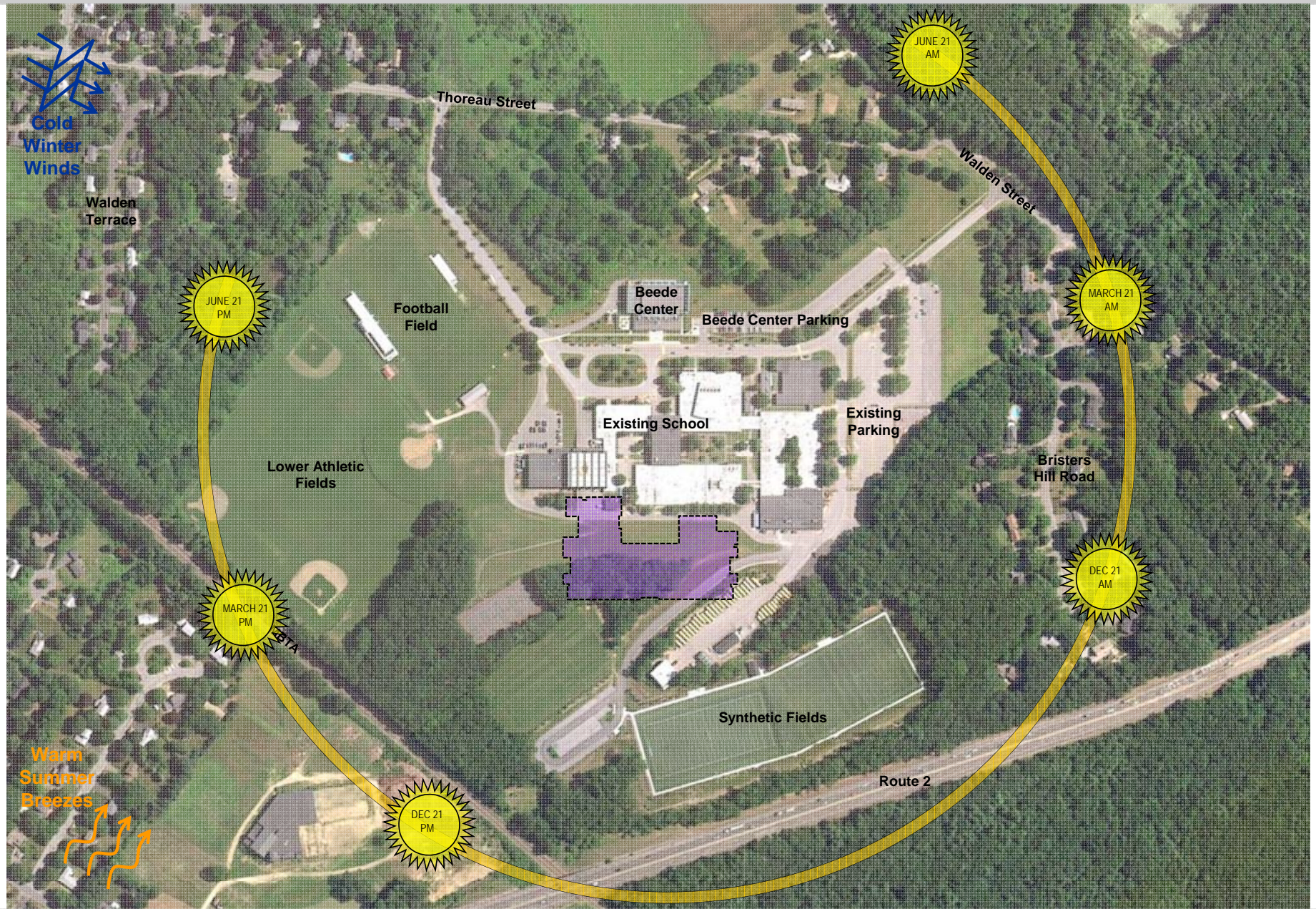
Sign up for our newsletter (on website)

Email: outreach@cchsbuilding.org

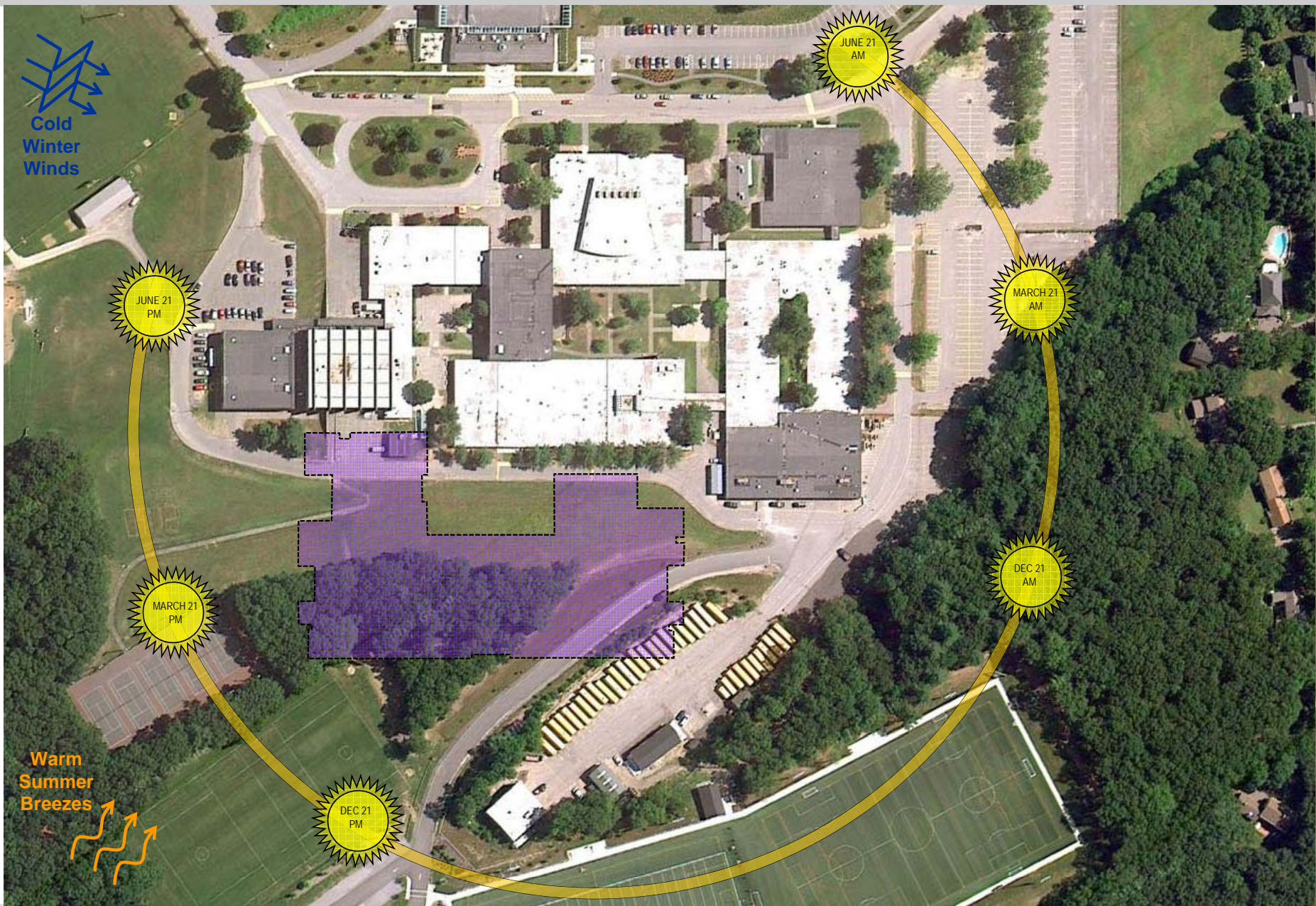
Attend a Building Committee meeting (schedule on website)

Attend our Community Forums

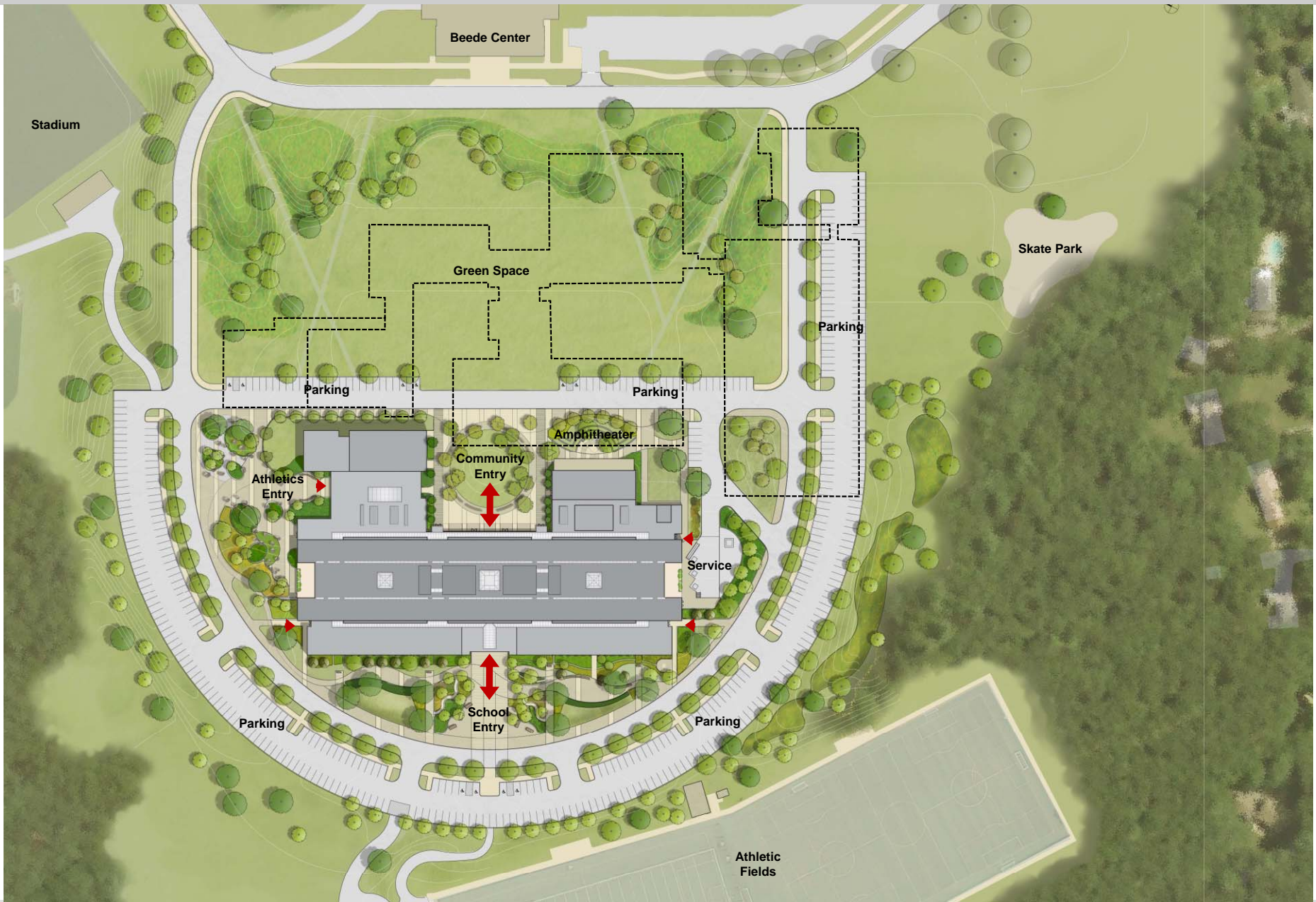
Site Plan



Site Plan



Site Plan



Floor Plan: Second Level



Floor Plan: First Level



Floor Plan: Third Level



Floor Plan: Fourth Level



Site Section



Synthetic Fields

Proposed Building

Beede Center

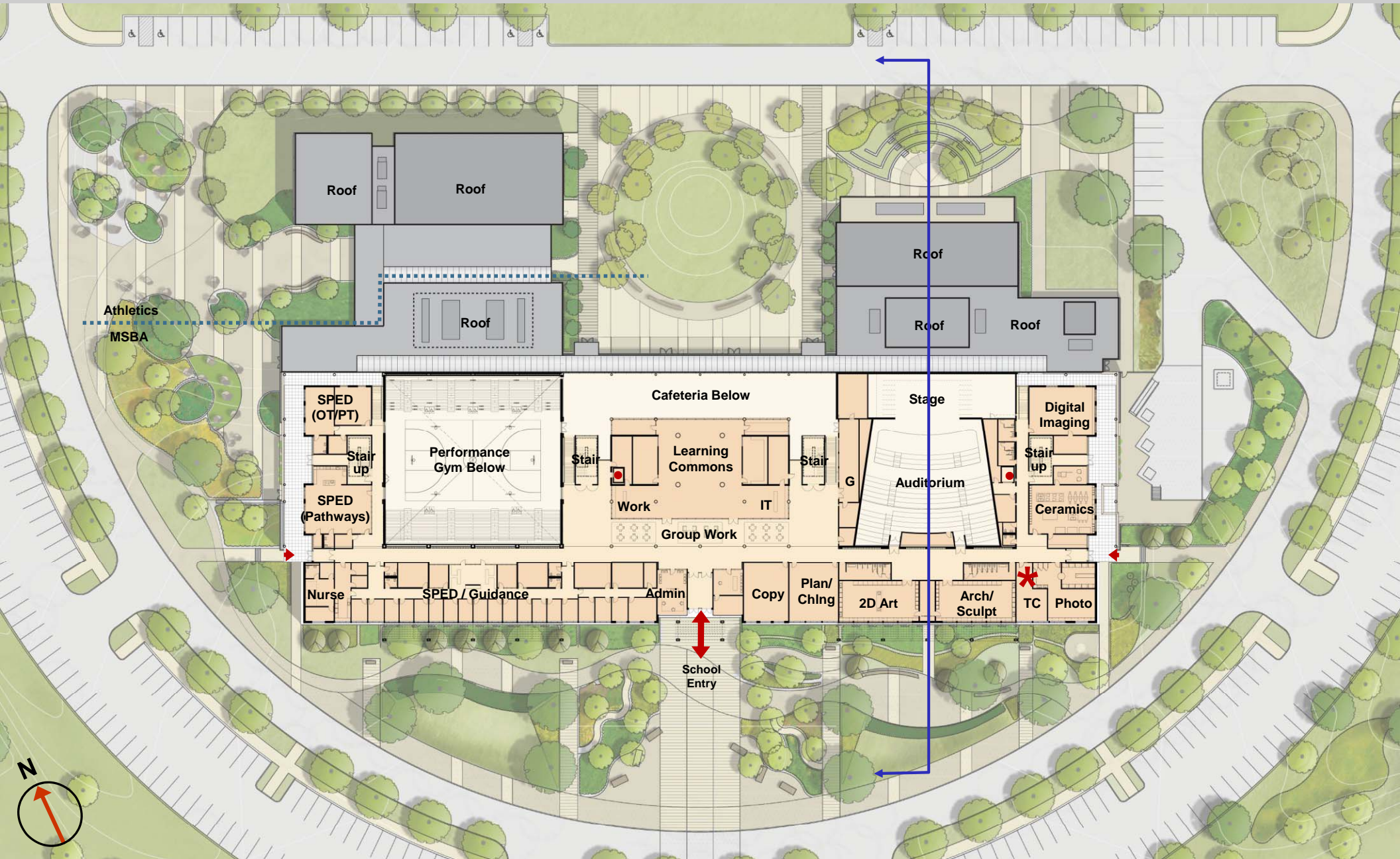
Floor Plan: Second Level



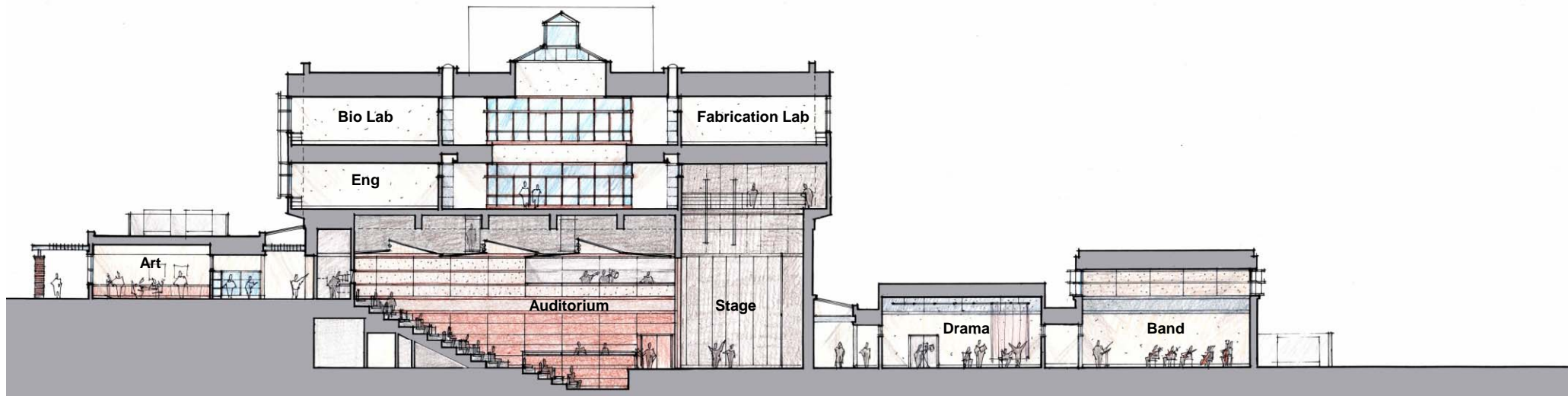
Building Section thru Gymnasium



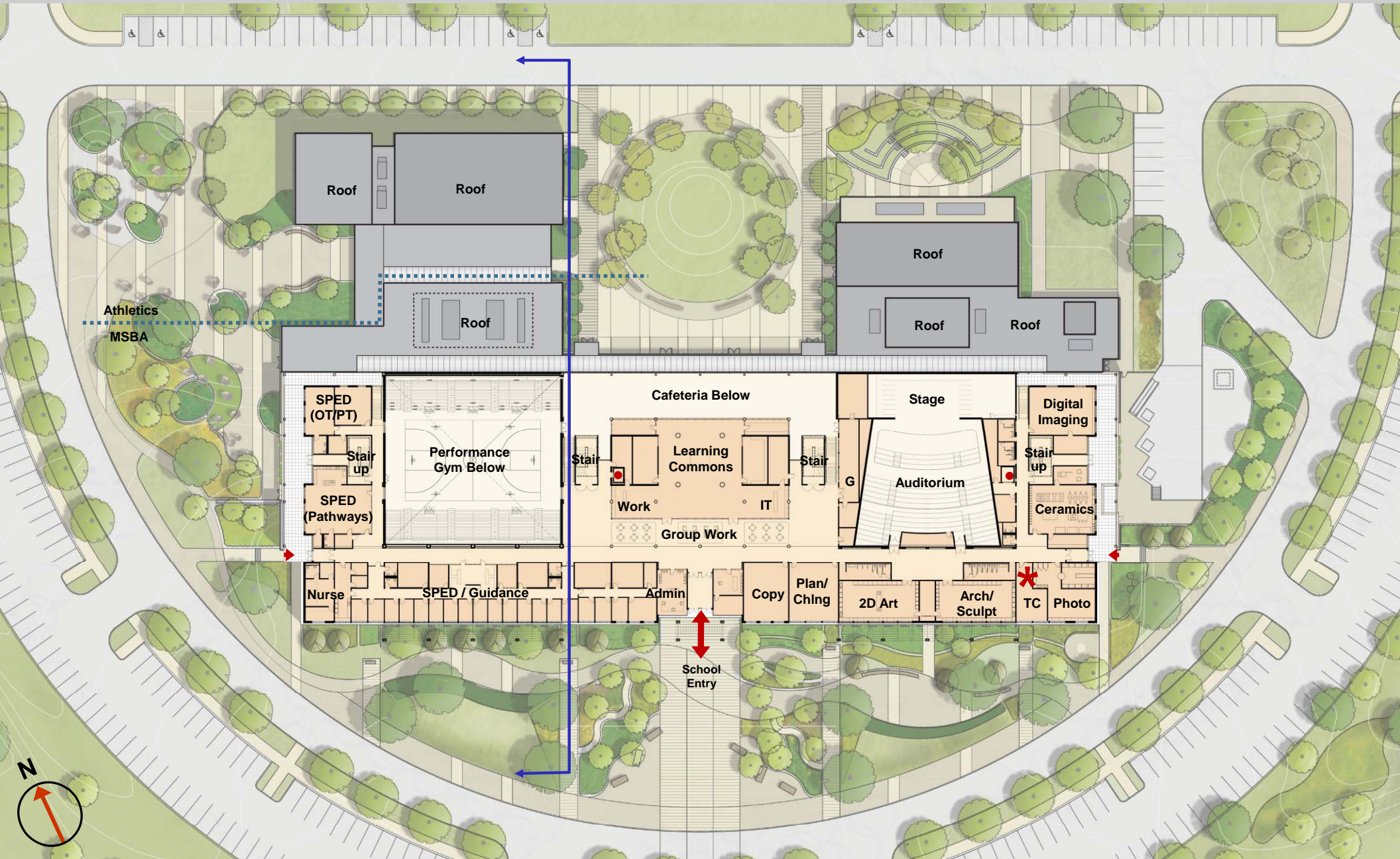
Floor Plan: Second Level



Building Section thru Auditorium



Floor Plan: Second Level



Building Section thru Learning Commons



South Elevation



West Elevation



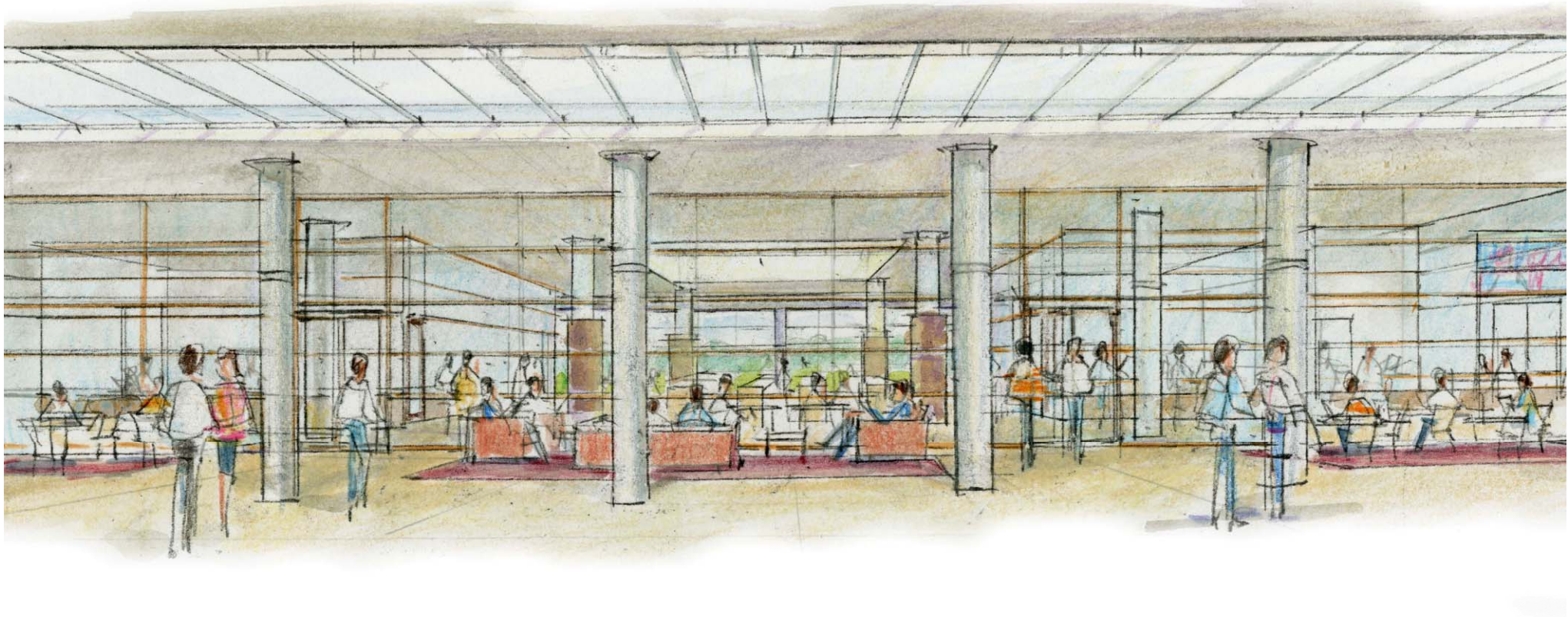
North Elevation



East Elevation



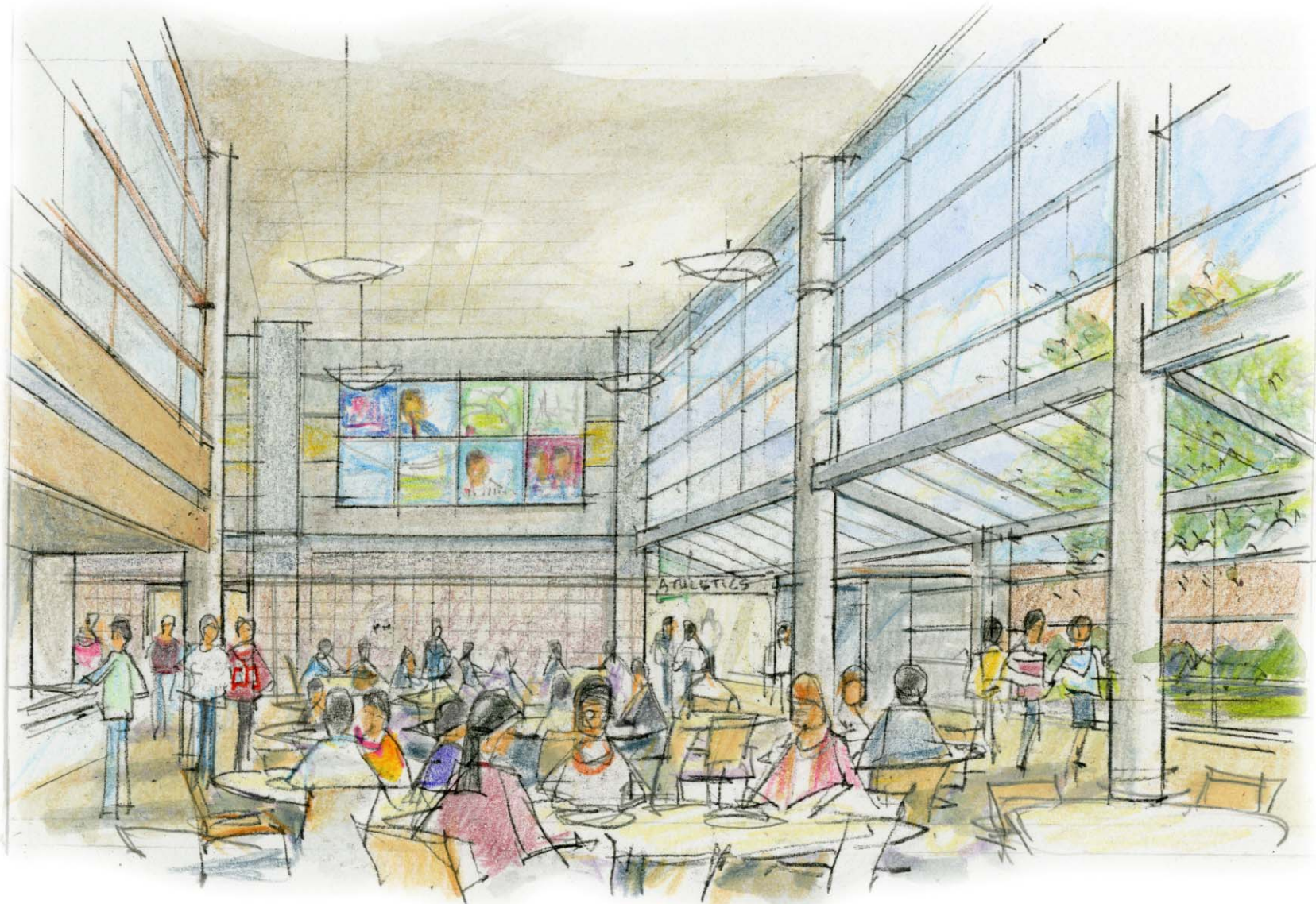
View From South Entry

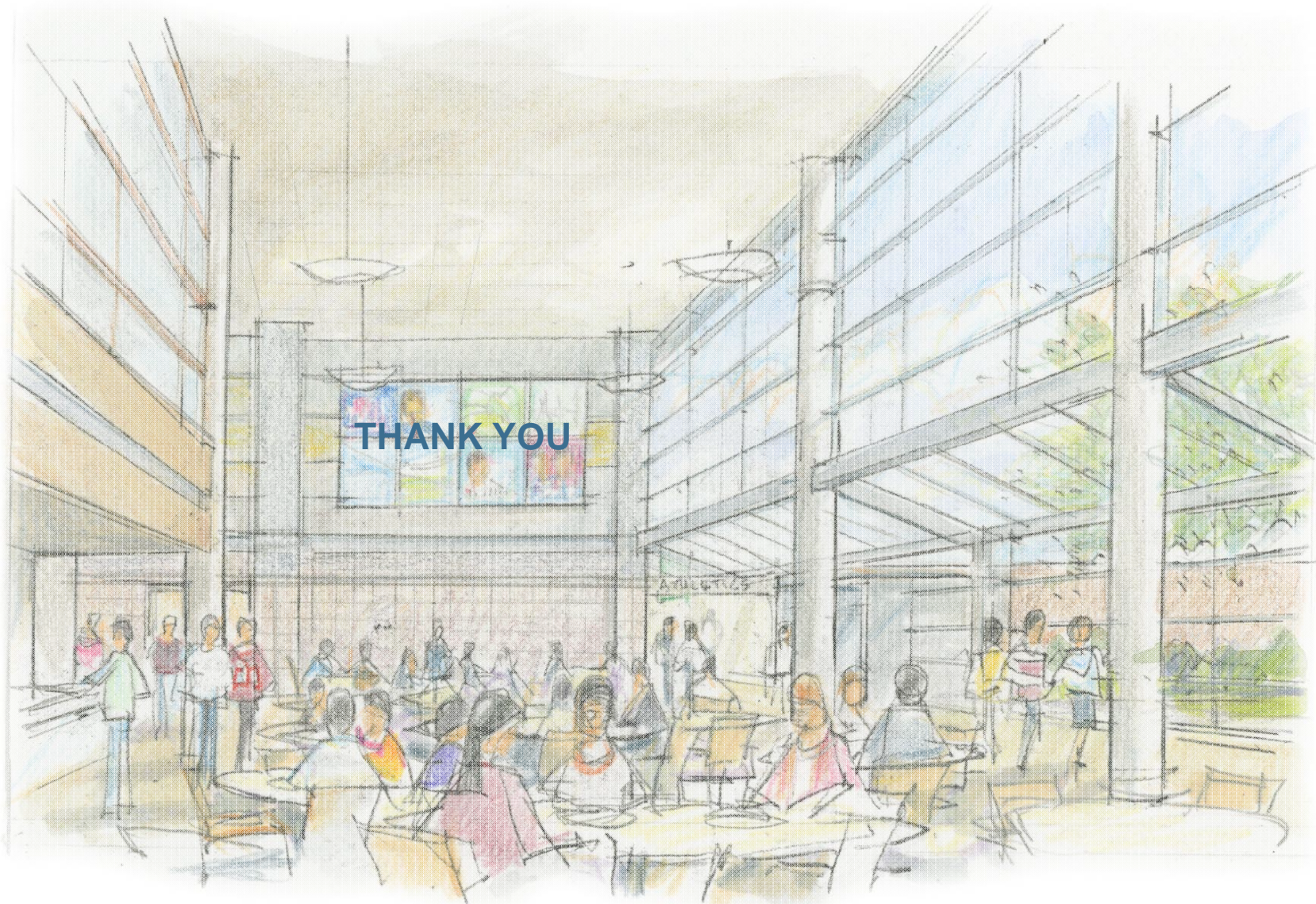


View out of Learning Commons



View in Cafeteria





Turner

Building the Future

Concord-Carlisle Neighborhood Meeting April 12, 2012

Jamie Meiser-Superintendent

Jim Liddick – Project Manager

Maureen Kirkpatrick – Project Executive

Turner Construction

CCHS – Neighborhood Meeting

Turner

CCHS *Project Team*

- ◆ **Concord-Carlisle High School Building Committee (HSBC)**
- ◆ **OMR Architects, Inc**
- ◆ **KVA**
- ◆ **Turner Construction Company**

Turner Project Sites

- ◆ **Safe**
- ◆ **Clean**
- ◆ **Secure**
- ◆ **Accountable**

Turner

Building the Future

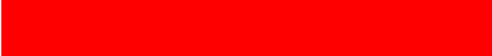
Concord-Carlisle High School *Preliminary* Schedule

Site Prep/Utilities



Start Summer/Fall 2012

Foundation/Structural Steel/Slabs



Exterior Wall



MEP & Finishes



Building Complete Summer 2014

Demo, Sitework, Landscaping



Complete Spring/Summer 2015

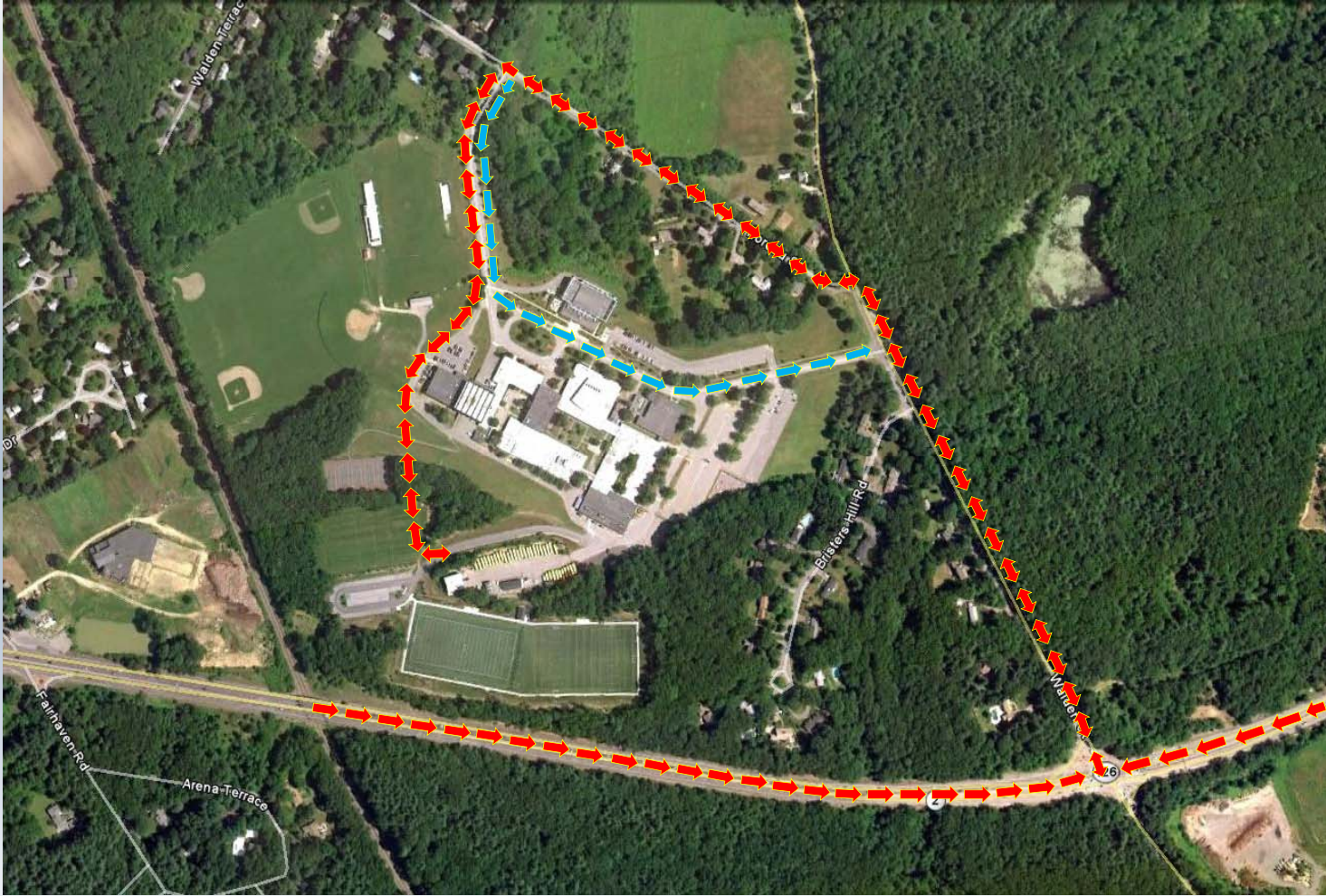
DRAFT

DRAFT

CCHS – Neighborhood Meeting



Concord-Carlisle High School – Traffic Pattern

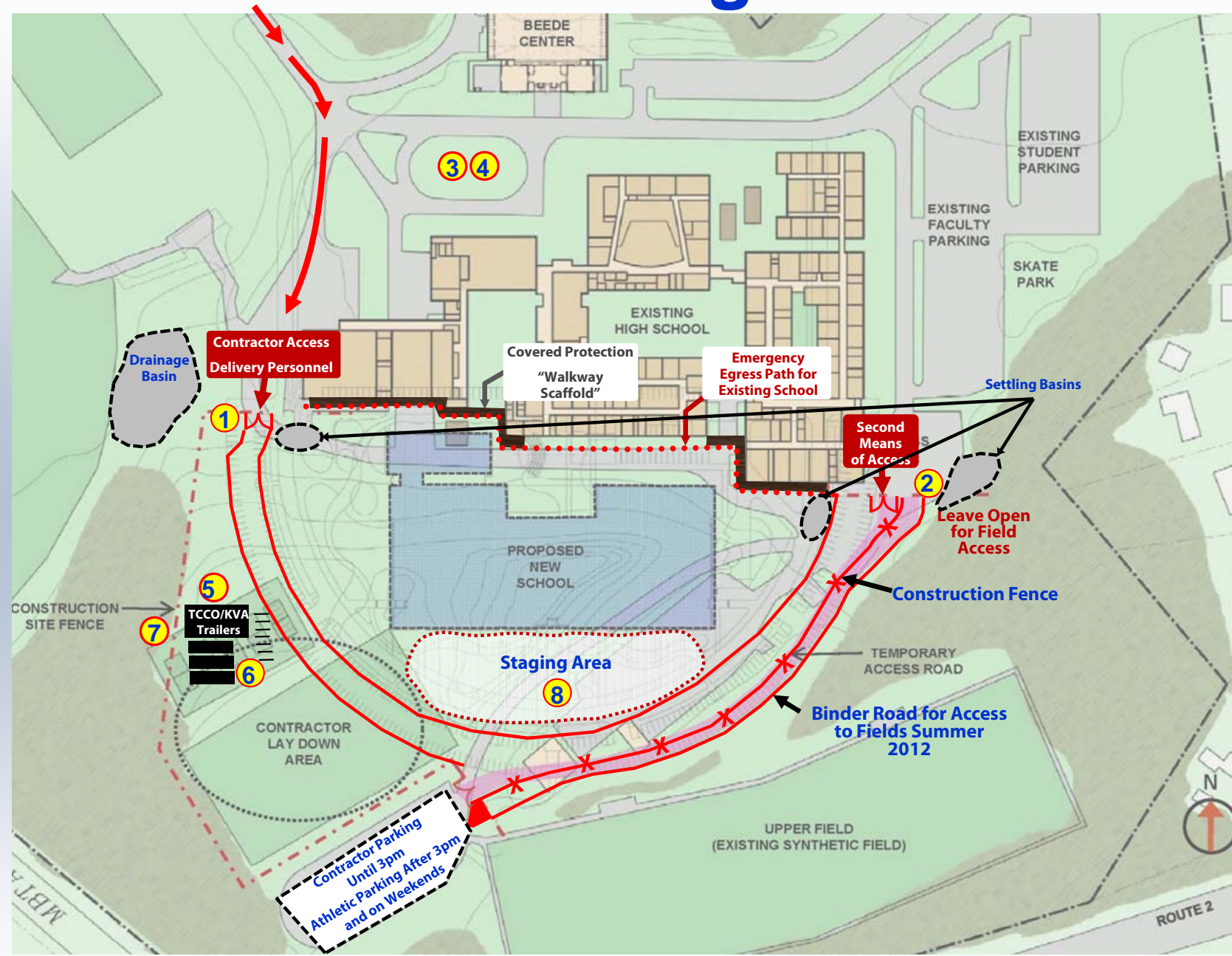


-  Construction Traffic
-  Parents & Buses

CCHS – Neighborhood Meeting



Logistics



EXISTING CONDITIONS & ENABLING WORK

- 1 Primary Entrance/Exit gate on controlled hour use
- 2 Allow Emergency Veh. In and out. Isolated use for concrete ops (Coordinated with school)
- 3 Bus drop off/pickup
- 4 Parent drop off/pickup
- 5 Construction Trailers
- 6 Onsite Parking(Approx 30)
- 7 Site Fence with filter fabric
- 8 Staging Area

* Turner would evaluate remote parking areas or on-site workers due to limited space within construction site.

CCCHS – Neighborhood Meeting

Turner

Worker Conduct

- ◆ **Mandatory Safety Orientation**
- ◆ **CORI checked**
- ◆ **No Smoking**
- ◆ **No shorts or sleeveless shirts**
- ◆ **No foul language**
- ◆ **Think like a Parent!!!!!!**

Site Prep/Utility Installation

- ◆ Site Prep & Utility Installation

- ◆ **Site Fence**
- ◆ **Deliveries**
 - 5-10 Trucks Daily
- ◆ **Noise Contributors (50-85db - Daytime)**
 - Earthwork Machines
 - Utility Installation
 - Soil Compaction

Site Prep



CCHS – Neighborhood Meeting

Turner

Utility Installation



CCHS – Neighborhood Meeting

Turner

Structural Steel Erection

◆ Structural Steel Erection

- ◆ **Deliveries**
 - 2-4 Trucks Daily in addition to sitework
 - Noise Contributors (50-85db - Daytime)**
 - Welders
 - Crane
 - Increased Manpower
- ◆ **Saturday work due to Weather Delays**

Structural Steel Erection



CCHS – Neighborhood Meeting

Turner

Concrete Slab Pours

◆ Concrete Slab Pours

◆ Slab Pours

- 1-2 Slab Pours a week / 20-25 slab pours
- Up to 40 Concrete Trucks per Day
- Finishing Concrete until 10pm with a 7am start
- Noise Contributors – Gas Finishing Equipment, Concrete Trucks, Pump Trucks (60-85db day/50-65db night till 10pm)
- Lights on for Finishing Concrete

Concrete Slab Pours

- ◆ Typical Finishing equipment being used after 5:00pm



Exterior Wall Construction

- ◆ Exterior Wall Construction

- ◆ **Deliveries**
 - 5-10 Trucks Daily
- ◆ **Noise Contributors (50-80db Daytime)**
 - Equipment - Lulls, Lifts, cranes
 - Continue to Increase Manpower
- ◆ **Saturday work**

Exterior Wall Construction



CCHS – Neighborhood Meeting

Turner

Communication

◆ Website Updates

◆ Emergency Phone #'s

- Jamie Meiser – 617-592-1673
- Jim Liddick – 617-590-4952
- Maureen Kirkpatrick – 617-592-1617
- Brian Dakin– 617-872-4302

Neighborhood Meeting

THANK YOU!