

# Concord-Carlisle Regional High School



Meeting #8

June 15, 2011

omr architects

# Agenda

Work Plan

Review Options

Next Steps

# CCHS Feasibility Study Work Plan

<b>Groundwork</b>	<ul style="list-style-type: none"> <li>○ Prepare contract</li> <li>○ Obtain and review all available/ pertinent documents</li> <li>○ Prepare schedule and work plan</li> </ul>	<ul style="list-style-type: none"> <li>○ Review existing conditions information</li> <li>○ Attend Site Based Committee Meeting</li> <li>○ Conduct User Group meetings and Prepare Space Summary</li> </ul>
-------------------	--	--

<b>Meeting # 1</b>	<b>Goals, Values and Space Summary</b>	
--------------------	--	--

<b>3/09/11</b>	<b>Objectives</b> <ul style="list-style-type: none"> <li>○ Review schedule and process</li> <li>○ Review goals, values</li> <li>○ Review proposed space summary</li> </ul>	<b>Follow-up</b> <ul style="list-style-type: none"> <li>○ Site walk thru with Engineers and Facilities Manager</li> <li>○ Submit draft space summary to MSBA for initial review</li> <li>○ Meet with MSBA for kickoff meeting</li> <li>○ Prepare Preliminary Alternative concepts</li> </ul>
----------------	--	--

<b>Meeting # 2</b>	<b>Vision, Space Summary and Preliminary Alternatives Concepts</b>	
--------------------	--	--

<b>3/23/11</b>	<b>Objectives</b> <ul style="list-style-type: none"> <li>○ Review Educational Vision, goals and values</li> <li>○ Review Preliminary Alternative Concepts</li> <li>○ Approve Initial Space Summary and PDP</li> </ul>	<b>Follow-up</b> <ul style="list-style-type: none"> <li>○ Complete Preliminary Design Program Submittal for MSBA</li> <li>○ Meet with MSBA</li> <li>○ Develop Preliminary Alternatives</li> </ul>
----------------	---	---

<b>Meeting # 3</b>	<b>Sustainability Goals</b>	
--------------------	-----------------------------	--

<b>4/06/11</b>	<b>Objectives</b> <ul style="list-style-type: none"> <li>○ Discuss sustainability goals and net zero options with team</li> </ul>	<b>Follow-up</b> <ul style="list-style-type: none"> <li>○ Develop Preliminary Evaluation of Proposed Alternatives</li> </ul>
----------------	---	--

<b>Meeting # 4</b>	<b>Preliminary Evaluation of Proposed Alternatives</b>	
--------------------	--	--

<b>4/13/11</b>	<b>Objectives</b> <ul style="list-style-type: none"> <li>○ Review Preliminary Evaluation of Proposed Alternatives</li> </ul>	<b>Follow-up</b> <ul style="list-style-type: none"> <li>○ Submit Preliminary Alternatives to MSBA for initial review</li> <li>○ Meet with MSBA</li> <li>○ Develop Final Evaluation of Selected Alternatives</li> </ul>
----------------	--	--

<b>Meeting # 5</b>	<b>Finalize Preliminary Alternatives</b>	
--------------------	--	--

<b>5/04/11</b>	<b>Objectives</b> <ul style="list-style-type: none"> <li>○ Review and Approve Preliminary Alternative(s)</li> </ul>	<b>Follow-up</b> <ul style="list-style-type: none"> <li>○ Prepare Final Evaluation of Alternatives</li> </ul>
----------------	---	---

<b>Meeting # 6</b>	<b>Final Evaluation of Alternatives</b>	
--------------------	---	--

<b>5/25/11</b>	<b>Objectives</b> <ul style="list-style-type: none"> <li>○ Review Final Evaluation of Alternatives</li> <li>○ Confirm Preferred Solution</li> </ul>	<b>Follow-up</b> <ul style="list-style-type: none"> <li>○ Prepare Preferred Schematic Report</li> </ul>
----------------	---	---

<b>Meeting # 7</b>	<b>Preferred Schematic Update</b>	
--------------------	-----------------------------------	--

<b>6/08/11</b>	<b>Objectives</b> <ul style="list-style-type: none"> <li>○ Review Preferred Schematic Update</li> </ul>	<b>Follow-up</b> <ul style="list-style-type: none"> <li>○ Prepare Preferred Schematic Report for MSBA</li> </ul>
----------------	---	--

<b>Meeting # 8</b>	<b>Preferred Schematic Report</b>	
--------------------	-----------------------------------	--

<b>6/15/11</b>	<b>Objectives</b> <ul style="list-style-type: none"> <li>○ Review and Approve Space Summary, Preferred Option &amp; PSR</li> <li>○ School Committee Approval</li> </ul>	<b>Follow-up</b> <ul style="list-style-type: none"> <li>○ Submit Preferred Schematic Report to MSBA</li> <li>○ MSBA Facilities Assessment Subcommittee and BOD Vote</li> </ul>
----------------	---	--



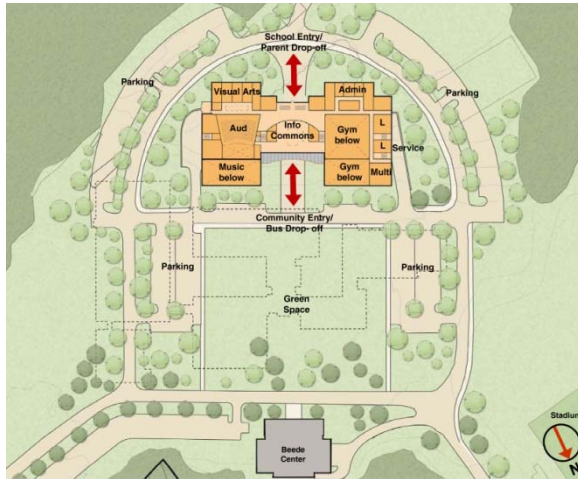
# Revised Space Summary

## Concord-Carlisle Regional High School Space Summary Comparison- Option 14C

Description	Existing Conditions	Proposed Space Summary*		MSBA 2010 Guidelines 1225 Enrollment	Delta: Proposed - MSBA
		2011/ 1225 Enrollment	1225 Enrollment		
<b>CORE ACADEMIC SPACES</b>	57,476	63,420	58,690	4,730	
SPED	7,145	5,970	13,090	(7,120)	
ART & MUSIC (Visual and Performing Arts)	11,779	12,650	8,200	4,450	
VOCATIONS & TECHNOLOGY	8,035	8,350	12,800	(4,450)	
HEALTH AND PHYSICAL EDUCATION	31,075	23,060	23,060	0	
MEDIA-LIBRARY (Learning Commons)	13,480	8,600	7,556	1,044	
AUDITORIUM / DRAMA	9,667	10,400	10,400	0	
DINING & FOOD SERVICE	13,068	10,262	10,262	0	
MEDICAL / NURSE	690	1,110	1,110	0	
ADM. & GUIDANCE (Student Support)	8,462	5,686	4,979	707	
CUSTODIAL & MAINTENANCE	2,779	2,544	2,544	0	
<b>SUB-TOTAL</b> Net Area	163,656	152,052	152,692	(639)	
<b>OTHER</b>	6,734	13,540	0	13,540	
<b>GRAND TOTAL</b> Net Area	170,390	165,592	152,692	12,900	
Net:Gross Ratio (Net Area / Gross Area)	1.37	1.45**	1.45	1.45	
Gross Area	233,800	240,601	221,725	18,876	

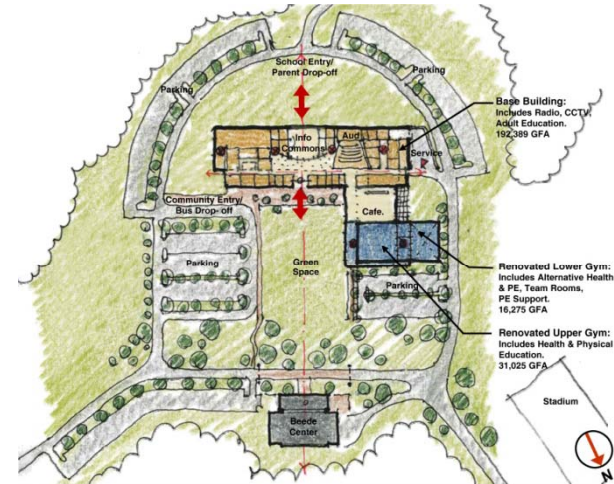


# Meeting #7 Summary



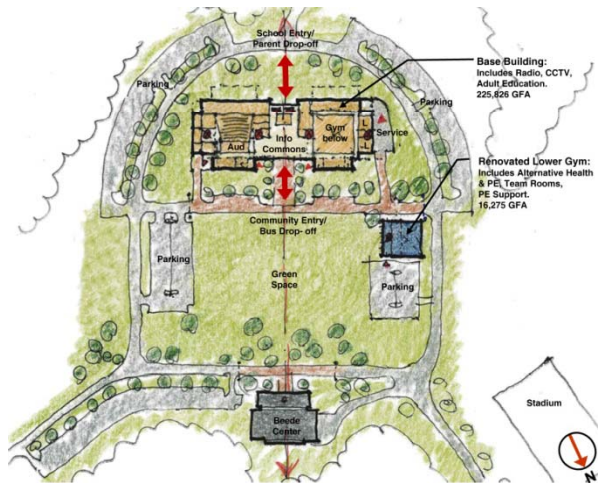
**Option 13**

All New Building, one phase, located South of the Existing School.



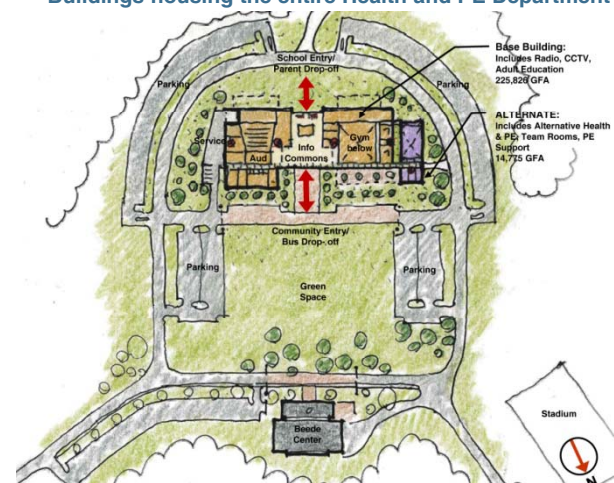
**Option 14A**

New "Base" Building internally connected to renovated Upper and Lower Gym Buildings housing the entire Health and PE Department



**Option 14B**

New "Base" Building with stand alone, renovated Lower Gym building housing the Alternative Health & PE, Team Rooms & PE Support spaces



**Option 14C**

New "Base" Building with separate, new, disconnected building housing the Alternative Health & PE, Team Rooms & PE Support spaces.

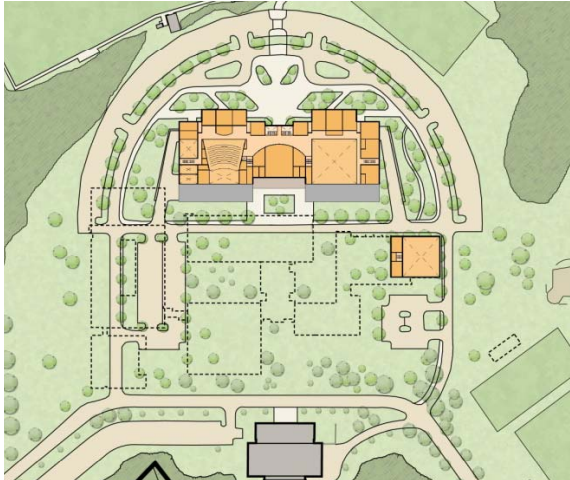


# Final Alternatives



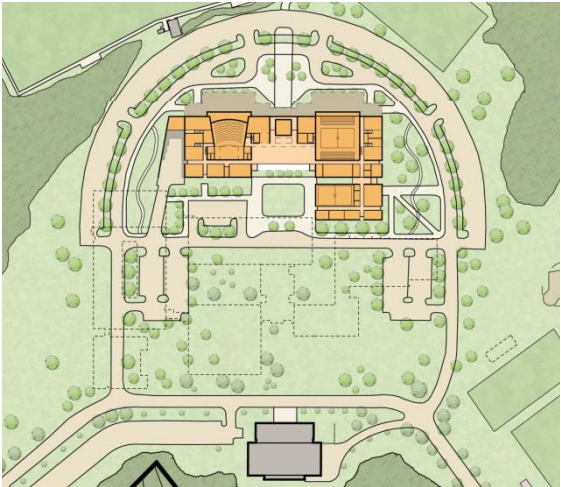
**Option 6R2**

Renovation and Addition, multi-phase, good solar orientation



**Option 14B**

New "Base" Building with stand alone, renovated Lower Gym building for the Alternative Health & PE, Team Rooms & PE Support spaces



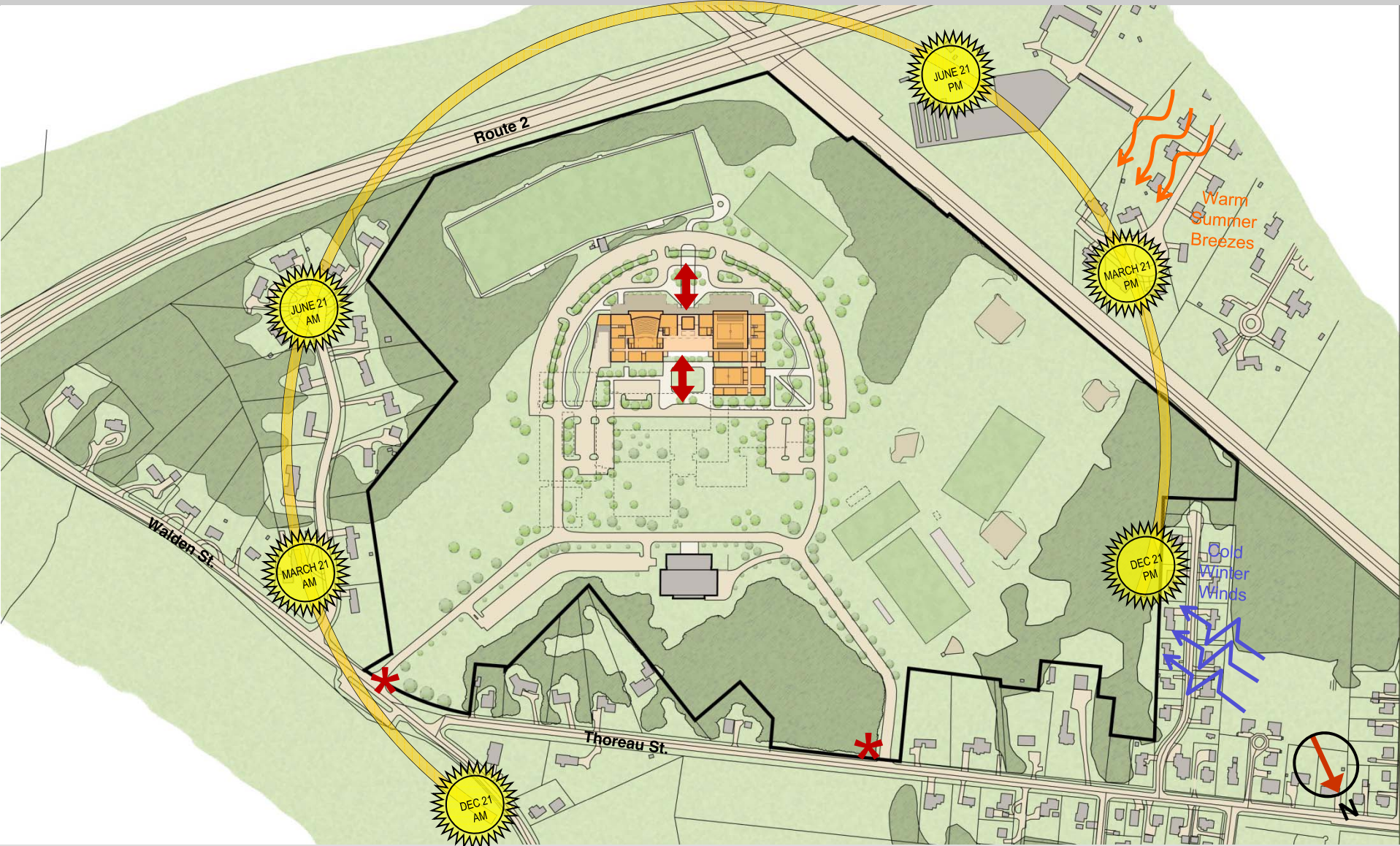
**Option 14C**

New "Base" Building with separate, new, disconnected building housing the Alternative Health & PE, Team Rooms & PE Support spaces.





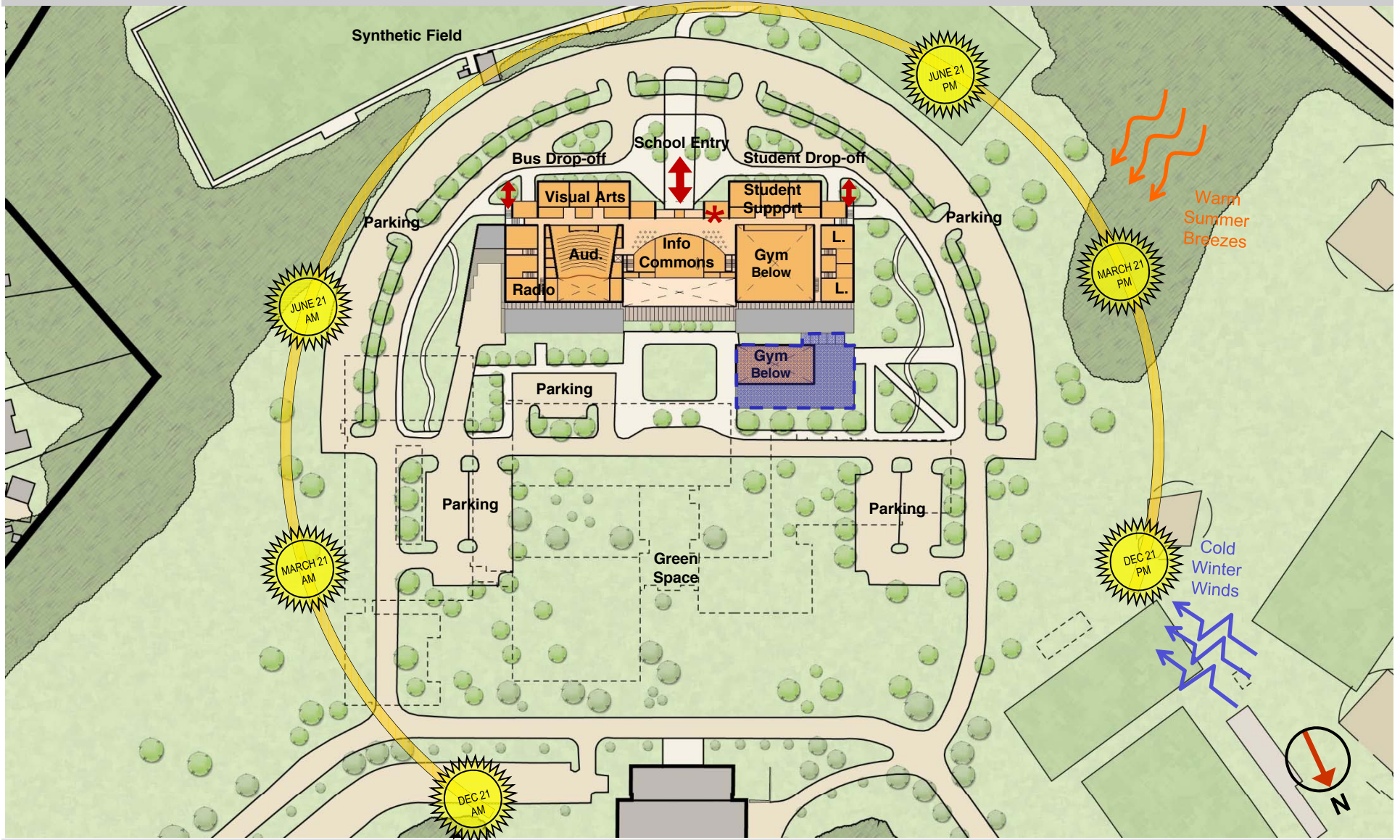
# Option 14C: Site Plan



15 June 2011



# Option 14C: Ground Floor Plan





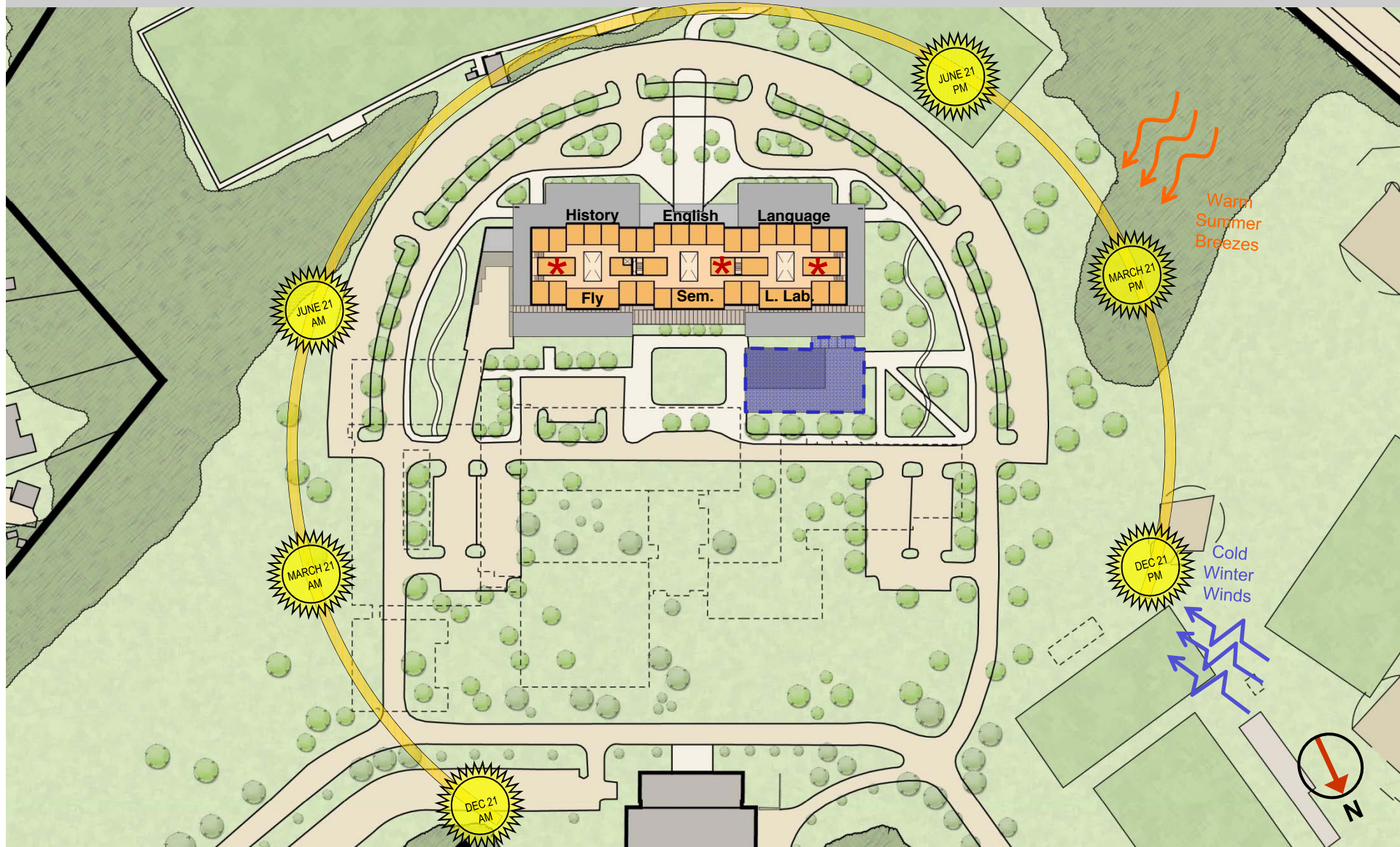
# Option 14C: Lower Floor Plan



15 June 2011



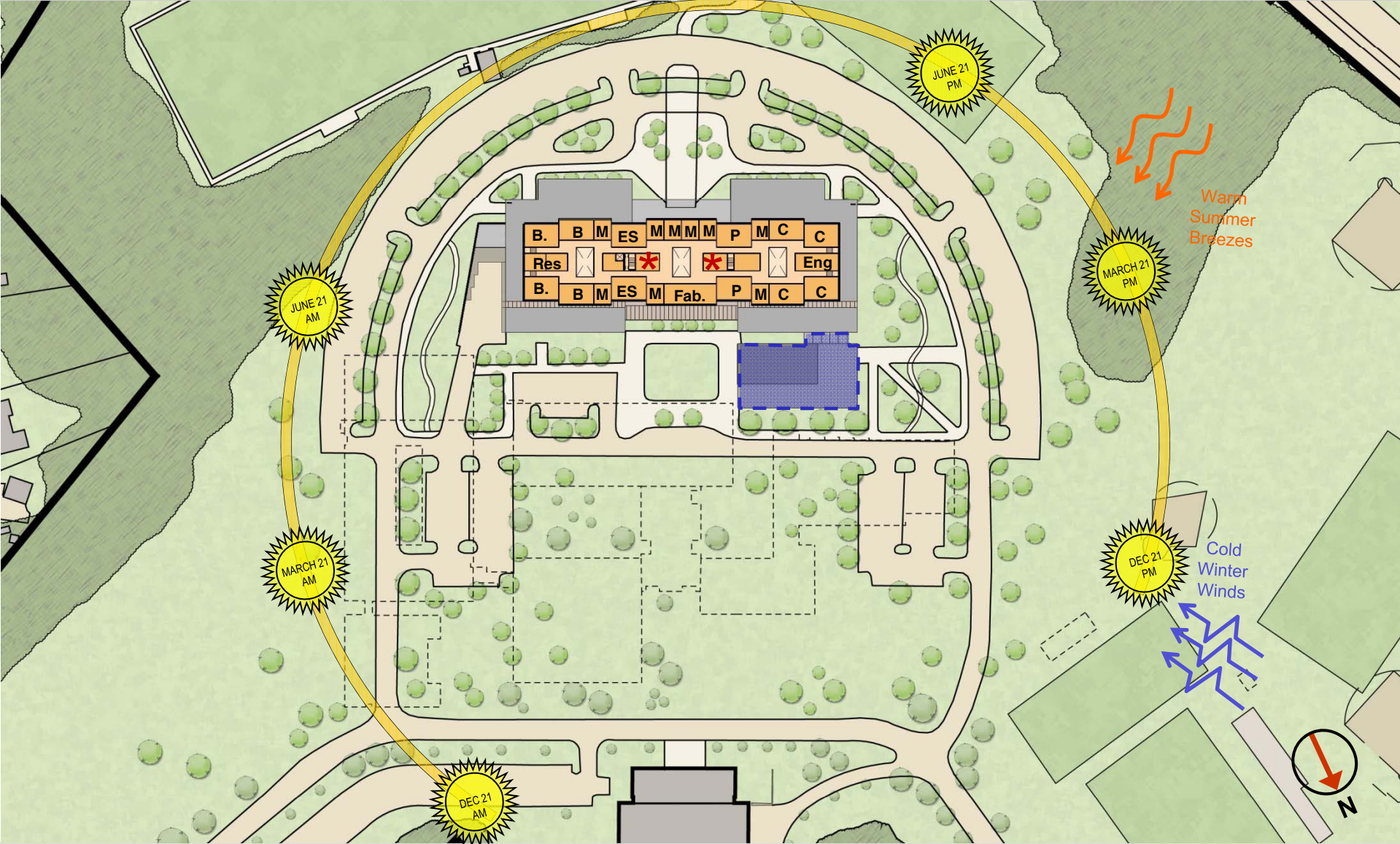
# Option 14C: Second Floor Plan



15 June 2011

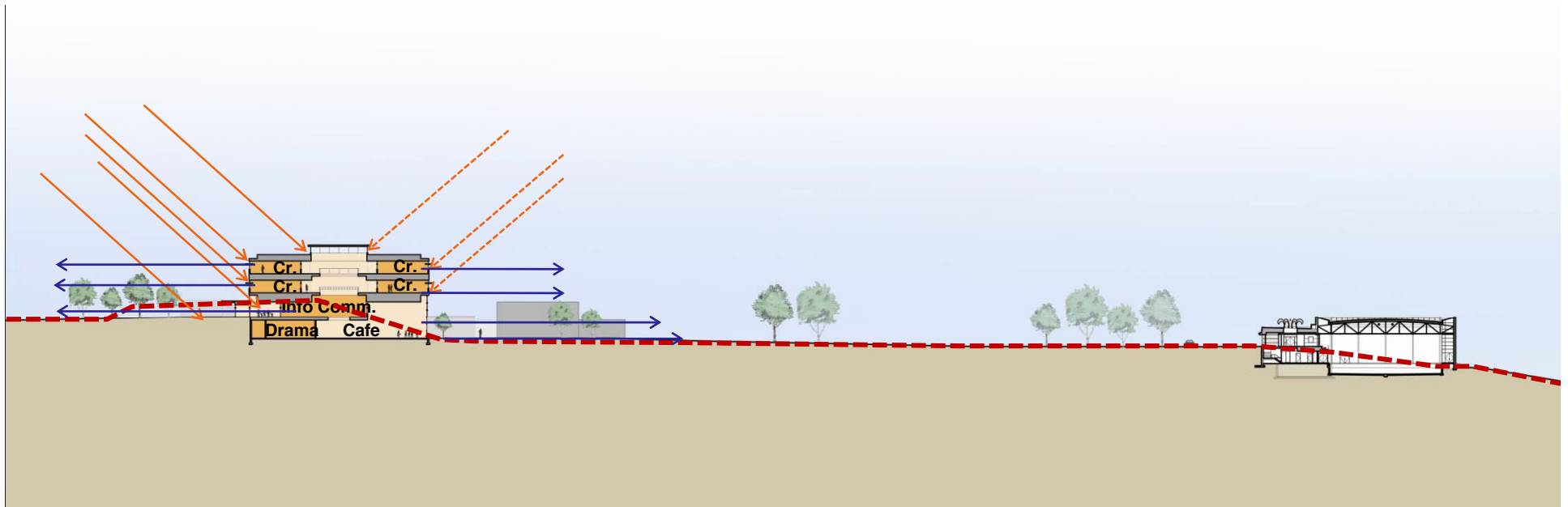


# Option 14C: Third Floor Plan



15 June 2011

# Option 14C: Section

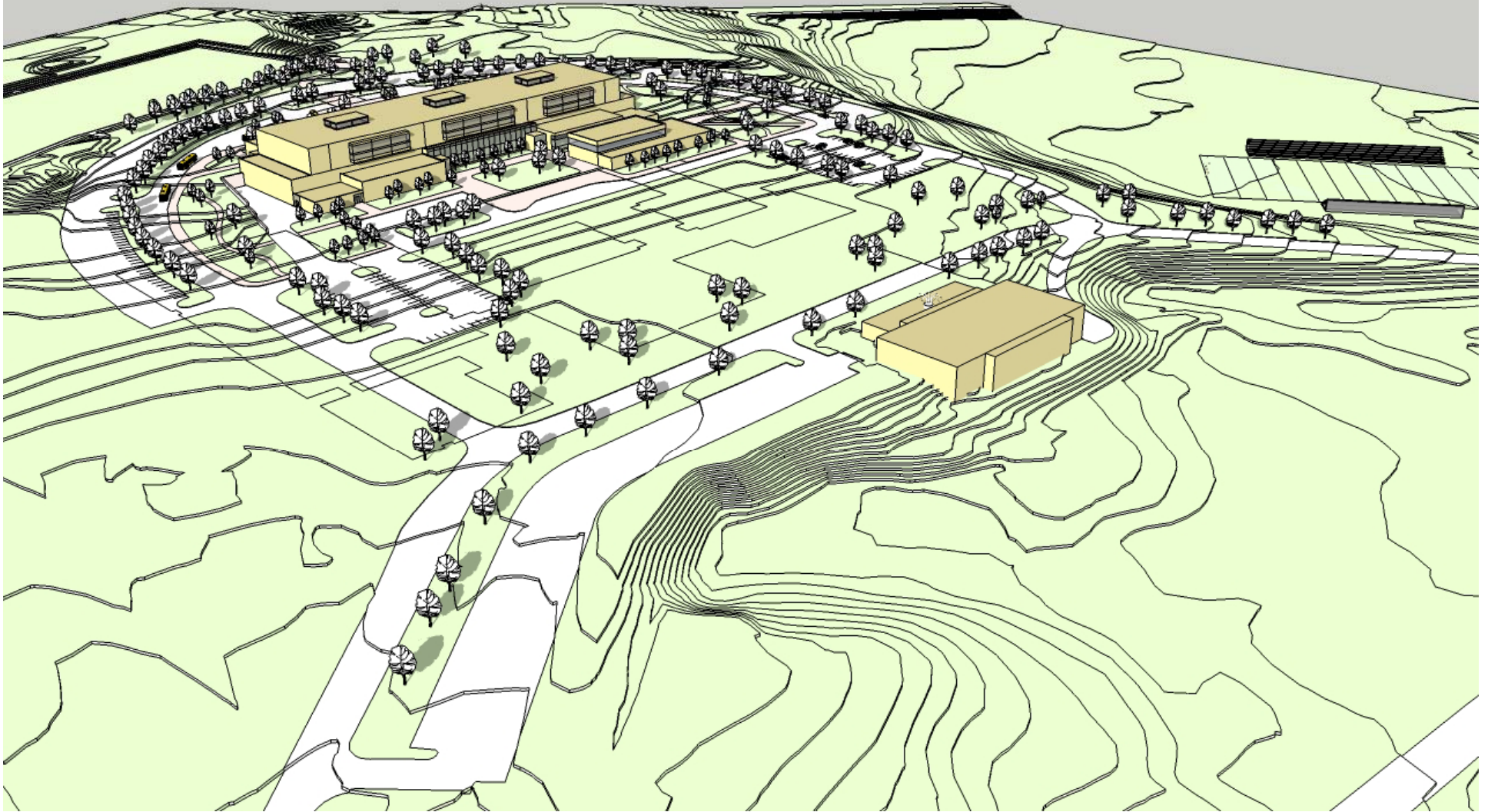




## Option 14C: View from South



## Option 14C: View from North



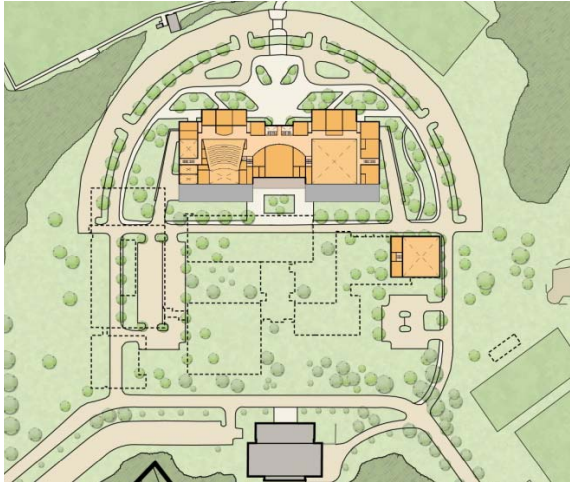


# Final Alternatives Summary



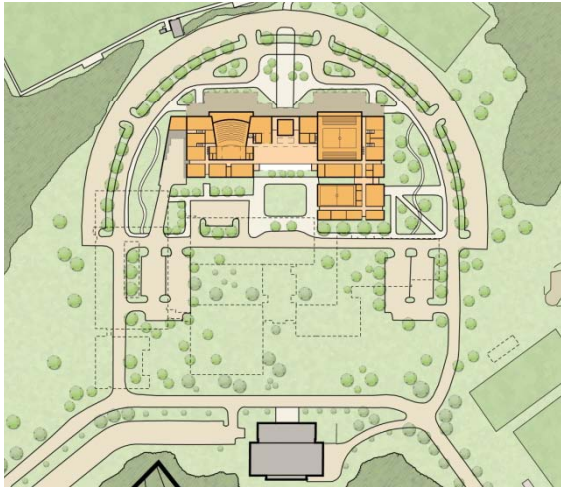
**Option 6R2**

Renovation and Addition, multi-phase, good solar orientation



**Option 14B**

New "Base" Building with stand alone, renovated Lower Gym building for the Alternative Health & PE, Team Rooms & PE Support spaces



**Option 14C**

New "Base" Building with separate, new, disconnected building housing the Alternative Health & PE, Team Rooms & PE Support spaces.



## Next Steps

- Submit PSR, June 17, 2011
- MSBA FAS Meeting, June 22, 2011
- SBC Meeting #SD1, June 29, 2011
  - Kick-off SD phase
  - Debrief FAS
  - Review SD progress