

**CONCORD PUBLIC SCHOOLS
CONCORD-CARLISLE REGIONAL SCHOOL DISTRICT**

120 MERIAM ROAD CONCORD, MA 01742 PHONE: 978.318.1500 FAX: 978.318.1537
www.concordpublicschools.net

May 18, 2011

Ms. Mary Pichetti, Director of Capital Planning
Massachusetts School Building Authority
40 Broad Street, Suite 500
Boston, MA 02109

RE: Concord-Carlisle Regional High School

Dear Ms. Pichetti,

We have reviewed your comments on the Space Summary submission for Concord-Carlisle Regional High School project and we are proposing the following changes to better achieve compliance with the MSBA guidelines in the new program and strive to meet the MSBA gross square footage and space standards. Please see the attached Exhibit #1- Proposed Space Summary and Comparison Worksheet revised and dated 16 May 2011 for more information.

1. CORE ACADEMIC SPACE

- **Teacher planning space 7,400 nsf** - Currently 74 FTE share 41 classrooms and use their planning space to conference with individual and small groups of students in Math, Science, Social Studies, English, and Foreign Language. CCHS teachers teach in classrooms 4/7 periods daily and work with students in their planning space 3/7 periods daily, as they do not have dedicated classrooms from which to work. We have allocated 100 SF per FTE as per the MSBA guidelines.
- **Resource Centers 2,075 nsf.** - Special education students receive individualized and small group tutoring/instruction in the Resource Centers. Additionally, regular education students receive tutoring support in Math, English/Social Studies, and Science.
- **Large Group Seminar 1,700 nsf** – Currently, the existing large group presentation room is used on a daily basis for 2 or more classes to gather for student demonstrations of their project – based learning assignments.
- **Physics and Earth Science classrooms 1200 nsf each**- These classrooms do not need wet labs or gas, and the science teachers confirmed that 1200 sq ft will support their classroom design and the delivery of the curriculum.
- **Foreign Language Laboratory** – We understand that MSBA accepts this variation to the guidelines and no additional action is required.
- **Health Classroom** – We understand that MSBA accepts this variation to the guidelines and no additional action is required.

2. SPECIAL EDUCATION

One hundred eighty five (185) special education students are included in the general education classrooms for core curriculum classes. They receive study skills and tutorial support from special education teachers and tutors in the Math, English/Social Studies and Science Resource Centers and the Special Education Resource Room. Math Strategies and Integrated English courses are provided for those special education students who need intensive specialized instruction. The Pathways program services approximately twelve (12) developmentally delayed students. These special education students receive related services, social/prevocational training, specialized tutorial support, and individualized program coordination in the self-contained classroom. The Pathways program is staffed with a full time head special education teacher who coordinates all students' progress and classroom modifications, a full time social worker, and an additional special education teacher, and several special education tutors. The Alternative Program serves approximately twelve to fifteen (12-15) special education students with severe social emotional issues in a self-contained classroom. A full time special education teacher and tutor are assigned to the program as well as a part time school psychologist. Special education students are mainstreamed according to their individual needs and IEPs. The lead special education teacher works closely with outside therapists and related service providers in order to create the most comprehensive support system for the individual special education students. The Lighthouse program serves approximately twelve to fifteen (12-15) special education students who are returning to CCHS from hospitalization for therapeutic intervention. A full time social worker, school psychologist and special education teacher/tutor serve these special education students in a self-contained classroom. Special education related services such as speech/language therapy, occupational therapy, physical therapy, vocational rehabilitation, and counseling are provided to special education students based on their IEPs.

This educational program has been reviewed with our Special Education department at CCHS, and we understand that at a later date we are required to submit a letter and drawings to the MSBA, which in turn will be submitted to the DESE for their approval during the Schematic Design phase of this project, prior to the Project Scope and Budget agreement.

3. ART & MUSIC/VOC-TECH

- To clarify, the proposed Art Gallery at 750 nsf was counted twice in the MSBA letter dated 5/13/11. There is only one Art Gallery @750 nsf. As suggested, we will move the Art Gallery back into the Art and Music category, but we plan to reduce it to 525 nsf in the program and carry 225 nsf in gross.
- To clarify, the storage and workroom space in the space summary referred to in the MSBA letter was only 450 nsf over MSBA guidelines. As suggested, we will reduce Art Workroom with Storage and Kiln from five spaces that total 900 nsf to three spaces that total 450 nsf. Additional storage space will be provided in gross.
- Based on the new Space Summary, the total space for Art/Music is 12,650 nsf and the total for Voc/Tech is 8,350 nsf. The total area for Art/Music

and Voc/Tech is now 21,000 nsf and within the amount included in MSBA guidelines.

4. HEALTH AND PHYSICAL EDUCATION

- **Reduce the Health and Physical Education area to comply with MSBA guidelines** - The existing Health and PE program space is 31,075 nsf for five teaching stations including 2 gyms, fitness center, and 2 temporary classrooms used for Health instruction and yoga. More than 76% of students participate in the athletic program, and both Concord and Carlisle communities expect the current program to continue in the new building project. We propose to move the additional PE spaces: Multipurpose PE space for yoga, dance, aerobics, fencing, wrestling - 2,175 nsf; Gym - 5,000 nsf; PE equipment storage - 500 nsf; 3 team rooms - 1,675 nsf; and athletic trainer space - 500 nsf; to the "Other" or community space category. These PE Other spaces total 9,850 nsf and are needed for some PE classes but are required for the athletic program. Please see #11, Other, below.
- The MSBA PE alternative was revised to 2,750 nsf. Note that there is still the need for two (2) health instructor's offices/showers/toilets in the MSBA program, as these are meant to be adult supervising control spaces located in the girls and boys locker rooms and are required to be single gender with a glass wall into the locker rooms. The Health and PE area now complies with the MSBA guideline of 23,060 nsf.
- **Health Classroom** – This is within the core academic category and we understand that MSBA accepts this variation to the guidelines and no additional action is required.

5. MEDIA CENTER

- We understand that MSBA accepts this variation to the guidelines and no additional action is required.

6. AUDITORIUM/DRAMA

- No additional action is required per MSBA.

7. DINING & FOOD SERVICE

- No additional action is required per MSBA.

8. MEDICAL

- To clarify, the MSBA refers to 1,100 nsf of Medical space in their May 13 2011 letter, but the MSBA guidelines state 1,110 nsf and the Proposed Space Summary remains at 1,110 nsf. The District assumes this was a typo, and would like the 1,110 nsf maintained for the record.

9. ADMINISTRATION AND GUIDANCE

- **Reduce the Administration and Guidance area by 451 nsf to meet MSBA guidelines plus accepted variations** – We propose to delete 456 nsf for Career Center. Currently the career center space is used for counselors to meet with small groups of students and to store college catalogs. The print catalog information has been replaced by web-based

resources, and students use computers to access college/career information. Counselors will use their office space and the conference room to meet with students.

- **Additional 300 nsf for METCO** – We understand that MSBA accepts this variation to the guidelines and no additional action is required.
- **Additional 200 nsf for two additional guidance counselors**- We understand that MSBA accepts this variation to the guidelines.
- **Additional 825 nsf for the “Challenge program and Planning Room”** - This space serves potential student drop-outs and students with in school suspension. We understand that MSBA accepts this variation to the guidelines.

10. CUSTODIAL AND MAINTENANCE

- No additional action is required per MSBA.

11. OTHER

- Per MSBA, we have moved the 750 nsf Art Gallery to the Art & Music category.
- We have also moved the additional PE spaces that are ineligible for reimbursement by the MSBA to Other. PE Alternative – Multipurpose 2,175 nsf, PE Alternative Gym 5,000 nsf, PE storage 500 nsf, 3 Team Rooms 1,675 nsf, and Athletic trainer, 500 nsf is necessary to replace current athletic space. All costs would be ineligible for reimbursement by MSBA, but we propose to include the program space within the project as it is vital to the functioning of the high school. Please see Exhibits #1, #2, #3, and #4 for quantitative and graphic representations of the Community (Other) spaces.
- **Radio Station 1,840 nsf, Cable/TV 1,600 nsf, Adult and Community Education 250 nsf** - We understand that this space and all costs associated with fitting out this space are considered ineligible for reimbursement by MSBA, but may be included within the project.

Additional comments re: OTHER -

Exhibit #2 is a graphic representation of the Proposed Space Summary relative to MSBA guidelines indicating the categories, “Health and Physical Education” shaded in orange and “Other” shaded in blue.

Exhibit #3 shows a Sample Winter Week Practice Schedule used for scheduling the spaces after school to accommodate all of the athletic programs at CCHS. The impact of having only one athletic space (gymnasium) would be extremely detrimental to the athletic and PE programs at the high school.

The scheduling of athletics begins at 2:30 and ends at 8:00pm on most days. Currently, CCHS has 6 basketball teams, 2 track teams, 2 fencing teams, and the wrestling team which utilizes the cafeteria for daily practice. The High School plays Freshman and JV games at the same 4:00 PM time slot on Tuesdays to allow the Varsity games to begin at 5:30 and end at 7:00 on school nights. Many days multiple teams are sharing space -- the track teams with nearly 100

students use half of the lower gym for practice on most days. On Wednesdays, the athletic department buses the fencing team to Billerica to practice at the fencing school. This opens up time to allow for Wednesday evening wrestling meets to be held in the main gym, rather than the cafeteria. In the fall, CCHS uses two gyms daily for volleyball with 60+ students practicing and has simultaneous matches at home so that they end by 6:30 PM. If the school had to have three matches in a row it would be closer to 8:00 PM, with the younger kids at the end of the evening. At the conclusion of volleyball practice, the cheer team then practices from 6:00-8:00 PM. CCHS also uses the lower gym as a visiting team locker room during home football games since no other space exists for this function.

Additionally, if only one gymnasium were to be located at the proposed high school, then when a contest is added to the schedule, it would eliminate the opportunity for all other teams to practice on that day. And it would eliminate most if not all community use of the high school gymnasiums. The Proposed Health, PE and Other program spaces are vital to the Towns of Concord and Carlisle and the students at Concord-Carlisle Regional High School.

The district respectfully requests that the MSBA accepts the square footage of the "Other" category as integral to the Project and allows the district to proceed with this square footage under one umbrella of a total project. The project team will design the additional SF (OTHER) as a separately defined quadrant or quadrants within the building. Exhibit #4 includes potential design ideas which articulate how a proposed New Building of 221,725 GSF (shaded in orange) might include an area of 19,272 GSF (shaded in blue) within the Project. The area in blue would house the community and after school spaces indicated in the "Other" category of the Space Summary. Each option has been developed to meet the educational program and to holistically join the buildings so that the amount of perimeter wall can be reduced thereby making the project as a whole, a more economical solution. We will continue to work with the users and the building committee to develop these design ideas through Schematic Design.

We understand that the MSBA has many ways of handling accounting for these ineligible costs, which are included within the Project. We would be happy to discuss and consider any accounting system that the MSBA would like to pursue to track and separate these costs.

12. TOTAL NET BUILDING FLOOR AREA – The District is now proposing to provide a total of 166,205 nsf which exceeds the MSBA guidelines by 13,513 nsf, but 13,540 nsf of this is in Other.

13. TOTAL BUILDING GROSS FLOOR AREA – The District is now proposing to provide a total of 240,997 gsf which exceeds the MSBA guidelines by 19,272 gsf. This overage is in Other and we understand it to be ineligible, but propose it to be included within the project.

Concord-Carlisle Regional High School District Space Summary Response
18 May 2011

We look forward to our scheduled conference call on Friday, May 20th at 3:30PM to discuss the space summary and to reach agreement that is mutually acceptable to MSBA and our communities.

Thank you for your assistance.

Sincerely,

Diana F. Rigby, Superintendent
Concord/Concord-Carlisle Regional School District

Enclosures:

Exhibit #1 - Proposed Space Summary revised and dated 16 May 2011

Exhibit #2 - Graphic Analysis of comparison of MSBA PE spaces to Proposed PE and "Other" spaces as requested by MSBA.

Exhibit #3 – Sample weekly winter athletic practice schedule

Exhibit #4 – Four design ideas to graphically represent the possible relationship of the MSBA eligible building to the "Other" part of the building.

cc: Mr. John Jumpe, MSBA Project Manager
Ms. Katie DeCristofaro, MSBA Field Coordinator
CCHS School Committee
CCHS Building Committee
David Saindon, KVA
Jeanne Roberts, OMR

Concord-Carlisle Regional High School Space Summary Comparison

01 April 2011, Rev 04 May 2011, Rev 13 May 2011, Rev 16 May 2011

Description	Existing Program	Proposed Program - 2011 1225 Enrollment	MSBA Guidelines - 2010 1225 Enrollment	Delta: Prop - MSBA
CORE ACADEMIC SPACES	57,476	63,420	58,690	4,730
SPED	7,145	5,970	13,090	(7,120)
ART & MUSIC (Visual and Performing Arts)	11,779	12,650	8,200	4,450
VOCATIONS & TECHNOLOGY	8,035	8,350	12,800	(4,450)
HEALTH AND PHYSICAL EDUCATION	31,075	23,060	23,060	0
MEDIA-LIBRARY (Learning Commons)	13,480	8,600	7,556	1,044
AUDITORIUM / DRAMA	9,667	10,400	10,400	0
DINING & FOOD SERVICE	13,068	10,262	10,262	0
MEDICAL / NURSE	690	1,110	1,110	0
ADM. & GUIDANCE (Student Support)	8,462	6,299	4,979	1,320
CUSTODIAL & MAINTENANCE	2,779	2,544	2,544	0
SUB-TOTAL Net Area	163,656	152,665	152,692	(26)
OTHER	6,734	13,540	0	13,540
GRAND TOTAL Net Area Net:Gross Ratio (Net Area / Gross Area) Gross Area	170,390 1.37 233,800	166,205 1.45 240,997	152,692 1.45 221,725	13,513 1.45 19,272

"Other" includes:

- Radio Station
- Cable TV Station
- Adult Education
- School Store
- Year Book Room

"Other" includes:

- Radio Station
- Cable TV Station
- Adult Education
- PE spaces addtl to MSBA

Legend lines revised 04 May 2011
 lines revised 16 May 2011

Preliminary Proposed Space Summary - Concord-Carlisle Regional High School

01 April 2011, Revised 04 May 2011, Revised 13 May 2011, Revised 16 May 2011

Table with 4 columns: ROOM TYPE, ROOM NFA1, # OF RMS, area totals. It lists existing conditions for various room types like Classroom - General, English, and Social Science.

Table with 3 columns: ROOM NFA1, # OF RMS, area totals. It shows proposed conditions, including a highlighted row for Classroom - General with 40 rooms and 34,175 area.

Table with 4 columns: ROOM NFA1, # OF RMS, area totals, Comments. It provides MSBA 2010 Guidelines and includes a comment for the Classroom - General row: '825 SF min - 950 SF max'.

Preliminary Proposed Space Summary - Concord-Carlisle Regional High School

01 April 2011, Revised 04 May 2011, Revised 13 May 2011, Revised 16 May 2011

Concord-Carlisle Regional High School		Existing Conditions	
ROOM TYPE	ROOM NFA ¹	# OF RMS	area totals
Group Seminar / Presentation (small: 20-30)		1	1,690
Small Foreign Language w/ kitchenette			
Small Foreign Language w/ kitchenette			
Small Group - standard			
Small Group - standard			
Small Group - standard			
Large Group Seminar / Presentation (60-80)	1,690	1	1,690
Science Classroom / Lab (16 FTE)		13	13,075
<i>Biology</i>		4	3,785
ExCR Biology Classroom	890	1	890
ExCR Biology Classroom/Lab	880	1	880
ExCR Biology Classroom/Lab	1,040	1	1,040
ExCR Biology Classroom/Lab	975	1	975
<i>Chemistry</i>		4	4,360
ExCR Chemistry Classroom	780	1	780
ExCR Chemistry Classroom	780	1	780
ExCR Chemistry Classroom/Lab	1,480	1	1,480
ExCR Chemistry Classroom/Lab	1,320	1	1,320
<i>Physics</i>		2	2,370
ExCR Physics Classroom/Lab	1,190	1	1,190
ExCR Physics Classroom/Lab	1,180	1	1,180
<i>Earth Science</i>		2	1,690
ExCR Earth Science Classroom	850	1	850
ExCR Earth Science Classroom	840	1	840
Science Resource Ctr (former writing lab)	870	1	870
<i>Prep Room</i>		11	2,380
Biology Prep Room	320	1	320
Biology Prep Room	520	1	520
Chemistry Prep Room	260	1	260
Chemistry Storage	80	1	80
Chemistry Storage	100	1	100
Physics Prep Room	430	1	430
Earth Science Prep Room	190	1	190
Earth Science Prep Room	160	1	160
Earth Science Storage	80	1	80
Earth Science Storage	80	1	80

Proposed		
Total		
ROOM NFA ¹	# OF RMS	area totals
	3	2,700
500	1	500
500	1	500
1,700	1	1,700
	13	16,745
	4	5,760
1,440	4	5,760
	4	5,760
1,440	4	5,760
	2	2,400
1,200	2	2,400
	2	2,400
1,200	2	2,400
425	1	425
	13	2,200
150	4	600
150	4	600
200	2	400
200	2	400

MSBA 2010 Guidelines (refer to MSBA Educational Program & Space Standard Guidelines)			
ROOM NFA ¹	# OF RMS	area totals	Comments
500	3	1,500	
1,440	11	15,840	3 x 85% ut=20 Seats-1 per /day/student
200	11	2,200	

Preliminary Proposed Space Summary - Concord-Carlisle Regional High School

01 April 2011, Revised 04 May 2011, Revised 13 May 2011, Revised 16 May 2011

Concord-Carlisle Regional High School	Existing Conditions		
ROOM TYPE	ROOM NFA ¹	# OF RMS	area totals
Chemical Storage Prep Room			
Foreign Language Recording&Storage Foreign Language Lab Storage	160	1	160
Central Chemical Storage Rm			
SPECIAL EDUCATION <i>(List classrooms of different sizes separately)</i>		21	7,145
Self-Contained SPED	765	1	765
"Alt Pro" (Alternative Program)	850	1	850
"Lighthouse" (Post-Hospitalization)			
Self-Contained SPED Toilet			
OT / PT Therapy and SPED Classroom	780	1	780
"Pathways" SPED	615	1	615
Resource Room	580	1	580
Small Group Room			
Resource Rooms / Seminar Rooms	104	9	935
SPED Offices			
SPED Psychologist Offices			
Small Group / Conference Room	230	1	230
SPED Support			
SPED Secretary	260	1	260
SPED Waiting	175	1	175
SPED Workroom	155	1	155
SPED Kitchenette	45	1	45
"Compass" (ex. program)	940	1	940
ELL / SPED (shared classroom)	815	1	815

Proposed		
Total		
ROOM NFA ¹	# OF RMS	area totals
200	1	200
200	1	200
	17	5,970
825	1	825
825	1	825
1,010	1	1,010
1,010	1	1,010
500	1	500
100	4	400
100	2	200
250	2	500
250	1	250
150	1	150
150	1	150
150	1	150

MSBA 2010 Guidelines (refer to MSBA Educational Program & Space Standard Guidelines)			
ROOM NFA ¹	# OF RMS	area totals	Comments
200	1	200	
		13,090	
950	9	8,550	assumed 8% of pop. in self-contained SPED
60	9	540	
500	4	2,000	1/2 size Genl. Clrm.
500	4	2,000	1/2 size Genl. Clrm.

Preliminary Proposed Space Summary - Concord-Carlisle Regional High School

01 April 2011, Revised 04 May 2011, Revised 13 May 2011, Revised 16 May 2011

Concord-Carlisle Regional High School	Existing Conditions		
ROOM TYPE	ROOM NFA ¹	# OF RMS	area totals
ART & MUSIC			11,779
Art Classroom - 25 seats		3	3,515
Art Workroom w/ Storage & kiln		5	565
2D Art CR (1-TS)	1,465	1	1,465
2D Art Storage	120	1	120
Ceramics (1-TS)	1,290	1	1,290
Ceramics Storage	100	1	100
Ceramics Storage	90	1	90
Kiln Room (none existing)			
Photography CR (1-TS)	760	1	760
Dark Room	210	1	210
Photography Storage	45	1	45
Art Teacher's Center (5 FTE)	330	1	330
Art Gallery		1	720
Student Gallery	720	1	720
Art Storage - General	150	1	150
Performance and Music		3	4,110
Band - 50-100 seats	1,600	1	1,600
Chorus - 50-100 seats	1,420	1	1,420
Ensemble (Chamber Orchestra)	1,090	1	1,090
Drama Classroom			
Music Practice		3	215
Practice	70	1	70
Practice	70	1	70
Practice	75	1	75
Music Support		4	769
Perf. Arts Teacher's Center			
Orch. Office	240	1	240
Band Office	169	1	169
Chorus Office	200	1	200
Theater Office	160	1	160
Music Storage		3	305
Band Storage	120	1	120
Music Library (Sheet Music)	75	1	75
Drama Costume Storage	110	1	110

Proposed		
Total		
ROOM NFA ¹	# OF RMS	area totals
		12,650
	3	3,225
	3	450
	1	1,200
	0	0
	1	1,200
	0	0
	1	100
	1	825
	1	300
	1	50
	1	500
	1	525
	1	525
	0	0
	4	5,500
	1	2,000
	1	1,400
	1	500
	1	1,600
	5	450
	4	300
	1	150
	1	400
	1	400
	1	500
	1	500

MSBA 2010 Guidelines (refer to MSBA Educational Program & Space Standard Guidelines)			
ROOM NFA ¹	# OF RMS	area totals	Comments
		8,200	
1,200	3	3,600	Assumed use - 25% Population - 5 times/week
150	3	450	
			now in gross
			now in gross
			JKR note: this is a subtotal line there is now 525 in net and 225 sf in gross
			now in gross
1,500	1	1,500	Assumed use - 25% Population - 5 times/week
1,500	1	1,500	
200	1	200	
75	6	450	
500	1	500	

Preliminary Proposed Space Summary - Concord-Carlisle Regional High School

01 April 2011, Revised 04 May 2011, Revised 13 May 2011, Revised 16 May 2011

Concord-Carlisle Regional High School		Existing Conditions	
ROOM TYPE	ROOM NFA ¹	# OF RMS	area totals
Electronic Music Lab (MIDI)		5	1,100
Digital Music Classroom	600	1	600
Electronic Music Lab Control Room	225	1	225
Recording Booth	100	1	100
Recording Booth	130	1	130
Recording Booth	45	1	45
VOCATIONS & TECHNOLOGY			8,035
Tech Clrm. - (E.G. Drafting, Business)			4,475
Mac Lab Video (currently in Art)	1,175	1	1,175
Architecture/Sculpture (1-TS)	1,500	1	1,500
Architecture/Sculpture Storage	150	1	150
IT Instruction (3 staff + 4 students)			
IT Office / Instruction (In ex. Mac Lab)	190	1	190
IT Office / Instruction (In ex. Mac Lab)	100	1	100
Digital Imaging (1-TS) [ex PC Lab]	1,360	1	1,360
Tech Shop - (E.G. Consumer, Wood)			3,560
Woodworking / Maint., / Set Const.	1,780	1	1,780
Woodworking /- Spray Booth	140	1	140
Woodworking Storage	140	1	140
Fabrication Lab			
Engineering/Robotics	1,500	1	1,500

Proposed		
Total		
ROOM NFA ¹	# OF RMS	area totals
	5	1,100
600	1	600
225	1	225
100	1	100
130	1	130
45	1	45
		8,350
		3,150
1,200	1	1,200
150	1	150
600	1	600
		5,200
2,000	2	4,000
1,200	1	1,200

MSBA 2010 Guidelines (refer to MSBA Educational Program & Space Standard Guidelines)			
ROOM NFA ¹	# OF RMS	area totals	Comments
		12,800	
1,200	4	4,800	Assumed use - 50% Population - 5 times/week
2,000	4	8,000	Assumed use - 50% Population - 5 times/week

Preliminary Proposed Space Summary - Concord-Carlisle Regional High School

01 April 2011, Revised 04 May 2011, Revised 13 May 2011, Revised 16 May 2011

Concord-Carlisle Regional High School		Existing Conditions	
ROOM TYPE	ROOM NFA ¹	# OF RMS	area totals
HEALTH & PHYSICAL EDUCATION			
[6 ex. teaching stations (TS) incl. 2- Health in core acad]		3	21,415
Gymnasium (1 Ex. TS - Performance)	9,775	1	9,775
PE Alternatives (MSBA) (1 Ex. TS)	2,100	1	2,100
PE Alternative (ex. Lower Gym)	9,540	1	9,540
Gym Storeroom (MSBA)		3	510
Ex. Upper Gym Storage	130	1	260
Ex. Upper Gym Storage	120	1	120
Ex. Weight Room Storage	65	1	130
Locker Rooms - Boys/Girls w/Toilets		2	8,305
Girls	4,405	1	4,405
Boys	3,900	1	3,900
Phys. Ed. Storage (MSBA)		3	500
Phys. Ed. Storage	260	1	260
Phys. Ed. Storage	170	1	170
Phys. Ed. Storage	70	1	70
Athletic Director's Office		1	145
Ex. Athletic Director's Office	120	1	120
Ex. Athletic Director's Office Storage	25	1	25
Health Instructor Office w/Shower & Toilet		1	200
Teacher's Center (5-FTE)			
Girls P.E. Office Locker Room	200	1	200

Proposed		
Total		
ROOM NFA ¹	# OF RMS	area totals
		23,060
	2	14,750
12,000	1	12,000
2,750	1	2,750
0	0	0
300	1	300
1,715	4	6,860
500	1	500
150	1	150
	2	500
250	2	500

MSBA 2010 Guidelines (refer to MSBA Educational Program & Space Standard Guidelines)			
ROOM NFA ¹	# OF RMS	area totals	Comments
		23,060	
12,000	1	12,000	
3,000	1	3,000	
300	1	300	
6,860	1	6,860	5.6 sf/student total
500	1	500	
150	1	150	
250	1	250	
			separate male and female req'd

Preliminary Proposed Space Summary - Concord-Carlisle Regional High School

01 April 2011, Revised 04 May 2011, Revised 13 May 2011, Revised 16 May 2011

Concord-Carlisle Regional High School		Existing Conditions	
ROOM TYPE	ROOM NFA ¹	# OF RMS	area totals
MEDIA CENTER			13,480
Media Center/Reading Room Commons/Media Center (4-staff / FTE) (Ex. area less Mac Lab)			13,480
Lower Library (inc. Lower level ramps)	5,640	1	5,640
Upper Library (stacks)	6,850	1	6,850
Library Office	640	1	640
Project Room / Conference	350	1	350
Faculty/Staff Workroom			
Faculty/Staff Break room			
Circulation Desk			
Silent Area/study carrels			
Group workstations			
Stacks area (11,800 vols)			
Conference/Project Rooms			
Large			
Medium (sim. to SPED / Guidance)			
Small (independent Study)			
Student Presentation area (Multi-purpose)			
AUDITORIUM / DRAMA			9,667
Auditorium (ex. 604 seats)	6,090	1	6,090
Stage	1,770	1	1,770
Wings 2 @ (15'x40')			
Auditorium Storage	190	1	190
Theater Storage			
Make-up / Dressing Rooms			
Ex. outside portable units	504	3	1,512
Controls / Lighting / Projection	105	1	105

Proposed		
Total		
ROOM NFA ¹	# OF RMS	area totals
		8,600
		8,600
400	1	400
400	1	400
850	1	850
3,400	1	3,400
2,000	1	2,000
400	1	400
250	1	250
100	3	300
600	1	600
		10,400
6,000	1	6,000
1,600	1	1,600
600	2	1,200
400	2	800
300	2	600
200	1	200

MSBA 2010 Guidelines (refer to MSBA Educational Program & Space Standard Guidelines)			
ROOM NFA ¹	# OF RMS	area totals	Comments
		7,556	
7,556	1	7,556	
		10,400	
7,500	1	7,500	2/3 Enrollment @ 10 SF/Seat - 750 seats MAX
1,600	1	1,600	
500	1	500	
300	2	600	
200	1	200	

Preliminary Proposed Space Summary - Concord-Carlisle Regional High School

01 April 2011, Revised 04 May 2011, Revised 13 May 2011, Revised 16 May 2011

Concord-Carlisle Regional High School		Existing Conditions	
ROOM TYPE	ROOM NFA ¹	# OF RMS	area totals
DINING & FOOD SERVICE			
Cafeteria / Student Lounge/ Break-out	8,880	1	8,880
Chair / Table Storage			
Scramble Serving Area			
Kitchen	2,245	1	2,245
Dishwashing	330	1	330
Kitchen Office	165	1	165
Food Storage	260	1	260
Walk-in Cooler	95	1	95
Walk-in Freezer	55	1	55
Walk-in Freezer	80	1	80
Staff Lunch Room	860	1	860
Staff Lockers	60	1	60
Kitchen Staff Toilet	38	1	38
MEDICAL			
Medical Suite Toilet	45	1	45
Nurses' Office/Waiting Room	500	1	500
Interview Room			
Examination Room / Resting	145	1	145
STUDENT SUPPORT (Adm. & Guidance)			
Administrative Suite			3,545
General Office / Waiting Room	510	1	510
Teachers' Mail and Copy Room	190	1	190
Duplicating Room			
Records Room	55	1	55
Principal's Office w/ Conference Area	220	1	220
Principal's Secretary / Waiting	290	1	290
Assistant Principal's Office - AP1	145	1	145
Assistant Principal's Office - AP2	140	1	140
Registrar's Office	205	1	205
Conference Room	450	1	450
Ex Administrative Office / Work Room	125	1	125
Ex. kitchenette	85	1	85
Ex. Meeting / Work Room	1,130	1	1,130

Proposed		
Total		
ROOM NFA ¹	# OF RMS	area totals
10,262		
6,125	1	6,125
456	1	456
600	1	600
2,525	1	2,525
556	1	556
1,110		
60	1	60
250	1	250
100	3	300
100	5	500
		6,299
		2,470
500	1	500
300	1	300
220	1	220
290	1	290
150	1	150
150	1	150
200	1	200
450	1	450
210	1	210

MSBA 2010 Guidelines (refer to MSBA Educational Program & Space Standard Guidelines)			
ROOM NFA ¹	# OF RMS	area totals	Comments
10,262			
6,125	1	6,125	3 seatings - 15SF per seat
456	1	456	
600	1	600	
2,525	1	2,525	1600 SF for first 300 + 1 SF/student Add'l
556	1	556	20 SF/Occupant
1,110			
60	1	60	
250	1	250	
100	3	300	
100	5	500	
		4,979	
613	1	613	
100	1	100	
200	1	200	
200	1	200	
375	1	375	
125	1	125	
150	1	150	
150	1	150	
120	1	120	
450	1	450	

Preliminary Proposed Space Summary - Concord-Carlisle Regional High School

01 April 2011, Revised 04 May 2011, Revised 13 May 2011, Revised 16 May 2011

Concord-Carlisle Regional High School		Existing Conditions	
ROOM TYPE	ROOM NFA ¹	# OF RMS	area totals
CUSTODIAL & MAINTENANCE		7	2,779
Custodian's Office			
Ex. Custodian's Office	450	1	450
Ex. Custodian's Office	75	1	75
Custodian's Workshop			
Ex. Maintenance Department	1,250	1	1,250
Custodian's Storage			
Ex. Custodian's Storage	80	1	80
Ex. Custodian's Storage	165	1	165
Ex. Custodian's Storage	255	1	255
Recycling Room / Trash			
Receiving and General Supply			
Storeroom			
Ex. trailer	504	1	504
Network/Telecom Room			
Existing included in gsf			
Ex. Grounds Equip.(incl. in gsf)			
Ex. Custodial Clos. (incl. in gsf)			
Ex. Telecom. Switch Clos. (incl. in gsf)			

Proposed		
Total		
ROOM NFA ¹	# OF RMS	area totals
		2,544
150	1	150
250	1	250
375	1	375
400	1	400
456	1	456
713	1	713
200	1	200

MSBA 2010 Guidelines (refer to MSBA Educational Program & Space Standard Guidelines)			
ROOM NFA ¹	# OF RMS	area totals	Comments
		2,544	
150	1	150	
250	1	250	
375	1	375	
400	1	400	
456	1	456	
713	1	713	
200	1	200	

Preliminary Proposed Space Summary - Concord-Carlisle Regional High School

01 April 2011, Revised 04 May 2011, Revised 13 May 2011, Revised 16 May 2011

Concord-Carlisle Regional High School	Existing Conditions		
ROOM TYPE	ROOM NFA ¹	# OF RMS	area totals
Total Building Net Floor Area (NFA) <i>(Program does not include a Field House)</i>			170,390
Proposed Student Capacity/Enrollment			
Total Building Gross Floor Area (GFA) ²			233,800
Ex. Permanent Building	230,050		
Ex. Temporary Buildings	3,750		
Grossing factor (GFA/NFA)			1.37

Proposed		
Total		
ROOM NFA ¹	# OF RMS	area totals
		166,205
		1,225
		240,997
		1.45

MSBA 2010 Guidelines (refer to MSBA Educational Program & Space Standard Guidelines)			
ROOM NFA ¹	# OF RMS	area totals	Comments
		152,692	
		1,225	181
		221,725	
		1.45	

¹ Individual Room Net Floor Area (NFA)

I hereby certify that all of the information provided in this "Proposed Space Summary" is true, complete and accurate and, except as agreed to in writing by the Massachusetts School Building Authority, in accordance with the guidelines, rules, regulations and policies of the Massachusetts School Building Authority to the best of my knowledge and belief. A true statement, made under the penalties of perjury.

² Total Building Gross Floor Area (GFA)

Includes the entire building gross square footage measured from the outside face of exterior walls

Architect Certification

I hereby certify that all of the information provided in this "Proposed Space Summary" is true, complete and accurate and, except as agreed to in writing by the Massachusetts School Building Authority, in accordance with the guidelines, rules, regulation

Name of Architect Firm: OMR Architects

Name of Principal Architect: Jeanne Kuespert Roberts, AIA

Signature of Principal Architect: _____

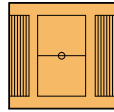
Date:

Exhibit #2

Graphic Analysis of comparison of MSBA PE spaces to Proposed PE spaces as requested by MSBA.

HEALTH & PE

MSBA
(23,060 NSF)



PERFORMANCE
GYM (12,000 S.F.)



PE ALTERNATIVES
(3,000 S.F.)



GYM STORAGE ROOM
(300 S.F.)



LOCKER ROOMS
(6,860 S.F.)



PE STORAGE
(500 S.F.)

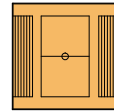


AD OFFICE
(150 S.F.)



HEALTH
INSTRUCTOR
(250 S.F.)

PROPOSED
(23,060 NSF)



PERFORMANCE
GYM (12,000 S.F.)



PE ALTERNATIVES
(2,750 S.F.)



GYM STORAGE ROOM
(300 S.F.)



LOCKER ROOMS
(6,860 S.F.)



PE STORAGE
(500 S.F.)



AD OFFICE
(150 S.F.)



HEALTH
INSTRUCTOR
(500 S.F.)

OTHER

PROPOSED
(13,540 NSF)



PE ALTERNATIVE
(2,175 S.F.)



PE ALT-MULTIPURPOSE
(5,000 S.F.)



PE ALT. STORAGE
(500 S.F.)



TEAM ROOMS
(1,675 S.F.)



ATHLETIC TRAINER
(500 S.F.)



RADIO STATION
(1,840 S.F.)



CABLE/TV
(1,600 S.F.)

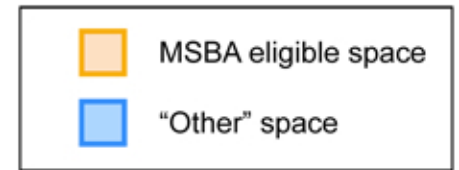


ADULT EDUCATION
(250 S.F.)

Sample Week
CCHS Winter Practice Schedule

Day	Date	B Varsity Basketball	B JV Basketball	G Varsity Basketball	G JV Basketball	B FRBasketball	G Fr Basketball	V Wrestling	Fencing	Indoor track	Cheer
Sunday	5-Dec	4:00MG	2:00 MG			XXXXXXXXXX	XXXXXXXXXX				
Monday	6-Dec	off	off	6:00MG	2:30-3:45 MG	2:30- LG	2:30-3:45MG	Practice 2:30cafe	Meet B 5:00	Practice 2:30LG	
Tuesday	7-Dec	Scrim @ Hudson	Scrim @ Hudson	3:45 MG	2:30-3:45 MG	2:30 LG	2:30-3:45 MG	Practice 2:30cafe	Practice LG 4:15	Practice 2:30LG	
Wednesday	8-Dec	5:45 MG	3:45 MG	6:00 LG	3:45MG	2:30-3:45MG	2:30-3:45MG	Practice 2:30cafe	Practice @ Prisd.	Practice 2:30LG	XXXX
Thursday	9-Dec	New Mission 6:30	Practice 2:30 LG	4:00 MG	2:30-3:45MG	2:30-4:00LG	2:30-4:00MG	Lower 6:00	Practice LG 4:30	Meet @ RLC	6:30 LG
Friday	10-Dec	Practice 4:00 LG	Practice 4:00 LG	Practice 3:30 MG	2:30 LG	2:30-3:30MG	2:30-3:30MG	Practice 2:30cafe	XXXXXXXXXX		6:30 LG
Saturday	11-Dec	10:00MG		Scrimage 3:00	Scrim LG 3:00	XXXXXXXXXX	XXXXXXXXXX	@ Waltham		LG 8:00	

EXHIBIT #4 - Alternative ideas representing possible building relationships



Idea A: Two distinct "Other" spaces; one at North, one at East

- Corridor separates "Other" space from eligible space
- North Portion - "Other" PE space on multiple floors
- East Addition - Radio, CCTV & Adult Education spaces on one floor

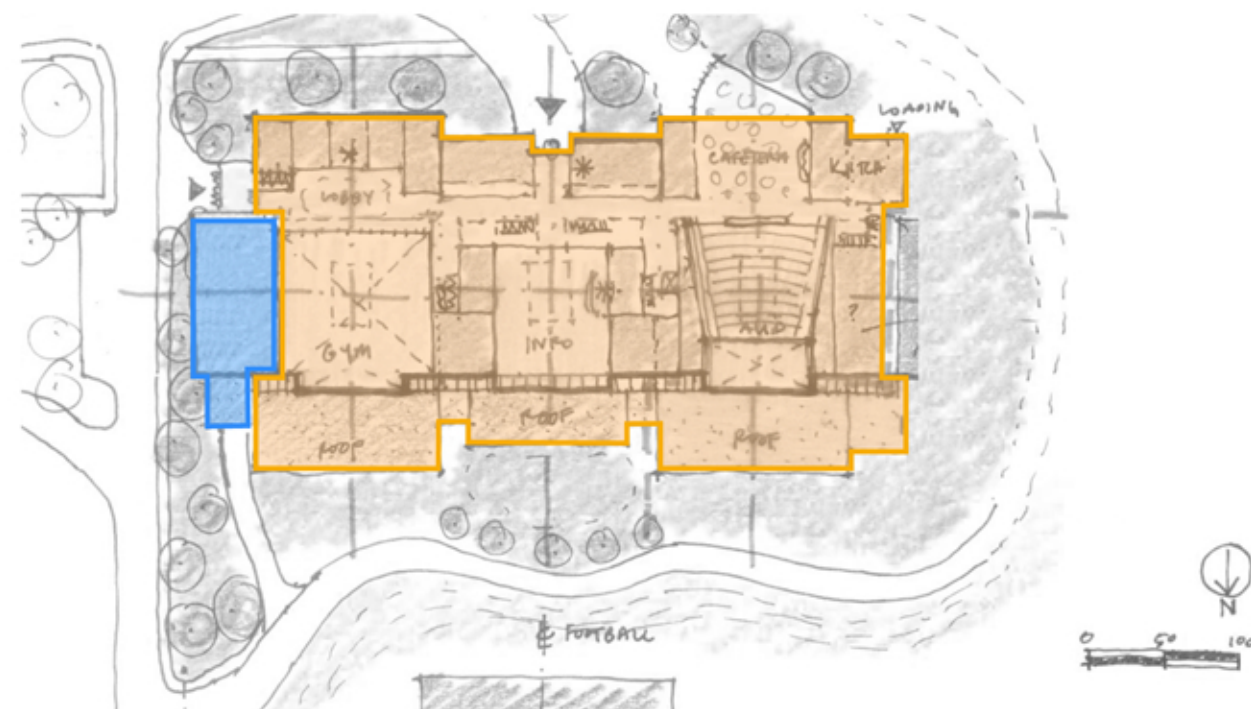
Idea B: "Other" Space on North side

- Corridor separates "Other" space from eligible space
- "Other" PE space on multiple floors
- Radio, CCTV & Adult Education spaces on one floor



Idea C: "Other" Space on North & West sides

- Corridor separates "Other" space from eligible space
- All "Other" space on one floor



Idea D: "Other" Space on East side, partially below eligible space

- Corridor separates "Other" space from eligible space
- "Other" PE space on multiple floors
- Radio, CCTV & Adult Education spaces on one floor